

# The Cleobury Clarion

**OCTOBER 2012**



## IN GOOD VOICE

*Deacon Justin Parker was in good voice at the Beer and Brass Day that opened the Cleobury Fringe.*

This is Justin, serenading John Bodenham with his version of the Rolling Stones hit 'Honky Tonk Women' on the Rectory Field. The brass bands had finished and the best part of the following entertainment was a group of local musicians with mandolins dominating their sound; they certainly made people sing along.

**The Cleobury Fringe Report**  
See Page 17.

## A NEW VIEW OF THE PARISH CHURCH

There was a special service in the Parish Church on September 16th, when the new lights were blessed and switched on. The place has been transformed, with a flexible system that was turned on gradually as the choir sang the opening hymn and the congregation looked around in wonder. You can now see the intricate timber structure in the chancel roof and the ancient wall mural that was hard to find is now clearly visible.

Rector Ashley Buck praised the community for the great generosity that made the work possible, supporting bodies presented cheques and Church Warden Ryland Robertshaw and his wife Penny were thanked for their years of work. Ryland was happy to point out that with this modern lighting, the whole church can be clearly lit as it absorbs less electricity than a domestic kettle. A lovely old building made even better.

## THANK YOU

Many many people have sent best wishes in response to the editor's request to get reports for this edition in very early. The cooperation from people who give their time and efforts freely has been humbling, and I am in their debt. Thank you all.

I am due to go into New Cross Hospital in Wolverhampton on Wednesday September 19th for surgery to correct a leaking heart valve and a blocked coronary artery. So this 60 page edition had to be with the printer early and its distribution will be in the capable hands of my Much Better Half. I am still the one to blame if there are any errors on the pages, so I apologise now if that is the case.

I look forward to walking down Cleobury's fine High Street again and up through the Talbot car park without getting out of breath. It's at times like this that you realise what a national treasure the National Health Service is. *Jim Reynolds*

## Firewood

Seasoned logs, barn dried & ready to burn.  
Free local delivery -01584 890993 or 07970878224  
Various size loads available



Paul Harding Tree Services





# Farlow Estates

Ludlow Branch. 5 High Street, t. 01584 876333

Cleobury Mortimer Branch. 36 High Street, t. 01299 271477

Kidderminster Branch. 71 Coventry Street, t. 01562 745082

enquiries@farlowestates.com www.farlowestates.com



**64, High Street, Cleobury Mortimer. £118,000**  
A beautifully presented property with exposed beams and accommodation over three floors.



**Clearview, Doddington £379,000**  
Fabulous executive family home with far reaching views and landscaped gardens.

**NEW**



**Woodside Lodge, Cleobury Mortimer £129,995**  
An exclusive development of just 4 wooden lodges with their own fishing rights, 11 months occupancy



**Bransley Cottage, Cleobury Mortimer £279,000**  
A beautifully renovated cottage in a rural location yet close to local amenities, parking for several cars.



**But-n-Ben, Oretton £575,000**  
Spacious family home with 0.83 acre paddock possible plot subject to relevant planning applications.



**Sunnyways, Cleobury Mortimer £395,000**  
A spacious family home incorporating a leisure suite with gym, games room & snooker room, magnificent gardens with a summer house.



# The Cleobury Clarion. October 2012

## In This Issue



*A lovely tribute to a local man, a floral model of a Ferguson TE20  
See Page 7*



*Nineveh Ridge Care Farm See  
Pages 14 & 15*



*Their way is the Fairway.  
In Business.  
See Page 57.*

### And On Other Pages....

- |   |  |
|---|--|
| 5: Pat's In The Swim                              | 29: ...And then Part 2                     |
| 9: Tom is Italy Bound                             | 33: Book Review - Ghostly Pubs             |
| 11: The Clarion Jobs Page                         | 35: News from the Library                  |
| 17: The Cleobury Fringe                           | 37: Clive Davies' Westwood Diary           |
| 19: Severn Edge Vets                              | 43: Clows Top Gardening Club               |
| 21: Bayton School and Nursery Page.               | 45: The Weekly Social Calendar             |
| 23: On High Street - Hems Closure Shock           | 47: Special Feature - Personality Portrait |
| 25: Small Ads Star - Liz Vanegas de<br>Quickenden | 49: October in the Wyre Forest.            |
| 27: Philip Dunne MP                               | 53: Cleobury Patients' Voice               |
| 28 Monthly Social Calendar Part 1.....            | 55: Vandalism at Greens Barn Allotments!   |
|   | 59: Local Information Guide                |

### ***Award Winning Handmade Fudge***

**Delicious Flavours Such As  
Baileys, Cleobury Crumble, Ten Past Eight**

**From £1.50 Per Bag**

**Traditional Sweets**

**Tailor Made Gift Baskets And Retro Jars**

**Party Cones £1.50**

**Hotdogs 99p**

**Ice Cream Thick Shake £1.20**

Visit Our Website

**[www.sweetsfudgeandtoffee.co.uk](http://www.sweetsfudgeandtoffee.co.uk)**

### ***The Sweet Shop***

*22 High Street Cleobury Telford* **used to be MON**

**Happy Hour!**

**Monday To Friday**

**1pm-2pm**

**3pm-4pm**

**2x 100g Sweet Bags £1.20**

**Now Open Sunday**

**10am to 2pm**

17 High Street,  
Cleobury Mortimer  
Tel: 01299 270 419  
Open Monday—Saturday  
6pm—11pm  
Sunday 12 noon—11pm  
Sunday Buffet 12—9pm

The  
*Spice  
Empire  
Ltd.*



**Cleobury's renowned Indian Restaurant, offering freshly made dishes to the highest standard. Both restaurants are happy to host parties for any celebration just Call Sayd with your enquiry 01299 270 419**

**Try our Sunday Buffet  
available from 12 noon to 9pm  
£8.95 per head and children under 10 are £4.50  
eat as much as you like...over 12 dishes to  
choose from**

\*\*\*\*\*

**Special Meal Deal @ TheBalti Bar  
Any starter, any maincourse & rice or a nan  
All for £8.95 pp  
Available Tuesday—Sunday**



6/7 Church street, Cleobury Mortimer  
Tel: 01299 271 485  
Open Tuesday—Sunday 6pm—11pm  
Open bank holiday Mondays  
Meal Deal £8.95 ph available Tues-Sun



57 High Street, Cleobury Mortimer  
Tel: 01299 271 604  
Open Wednesday—Sunday 6pm—11pm

## Clarion Clippings - The Local News

### IN THE SWIM - FOR THE BEST OF ALL REASONS



*Pat Williams with daughter Victoria after a swim at Coniston Water in the Lake District. There's still time to donate to their fund raising for The Haven.*

Pat Williams is a magic lady. You cannot keep her fighting spirit down.

Last year she raised money for The Haven, the Hereford care unit where she goes for help with her fight against cancer. She has since been told that the disease is spreading, so her answer was to enter the Great North Swim to raise more money for the cause. But that had to be cancelled because of bad weather, surprise, surprise,

so Pat did her own very individual thing.

She got a band of friends together, including daughter Victoria, and they all did a swim in Lake Coniston in August. As I write this, she has raised £1148 for The Haven and the total is bound to rise, because we want Clarion readers to get behind this quite remarkable lady. I know how kind people in this wide community are, and I'm asking you all to think about making a donation to boost Pat's remarkable efforts.

Please dial [www.justgiving.com/pat-williams2](http://www.justgiving.com/pat-williams2) and make a donation. I know there's been criticism of the Just Giving site recently, because they take a percentage to cover costs, but it's the simplest way for devoted people to reach the public. This cause rises above that squabble; please make a donation if you possibly can.

### FAREWELL TO A FAVOURITE

The announcement that Timmis's hardware store in Bewdley is to close brought the sort of reaction that sort of news doesn't normally provoke.

Our printer, Linda Fowler, said what a disappointment it was that her favourite shop was to disappear. And an anonymous

letter - the first time the Clarion has ever quoted an anonymous source - simply said: "May I through your Clarion say a big Thank You to Timmis of Bewdley for their service to the public, always with a smile and everyone welcome. Guy is a true gentleman."

What more can be said?

### KINLET PLEASURES THE OFSTED INSPECTORS

Anita Raymond, head teacher at Kinlet's Church of England Primary School, should be proud of her team. Their school has been classified "A Good School" by Ofsted (but didn't we all know that?) and widens its pupils' horizons and raises their levels of ambition.

So it's no surprise that they are holding an Open Morning on Saturday October 20th, from 10.00 to 12.00. It's to show off the place and take enquiries from parents who would like their own children to join the happy ranks when the next academic year starts in September 2013.

The Kinlet Family Playgroup, who also earned a 'Good' rating from Ofsted this July, will be open at the same time. It makes sense for a nursery and primary school who share premises to welcome parents of young children and show how they can progress on one welcoming site.

## TDC CARPENTRY SERVICES

- Fully insured qualified professional
- Excellent workmanship and quality customer care
- From hanging doors, fitting kitchens to bespoke projects

**Tim Clare - 01299 270774 / 07890 519980**

# Mawley Oak Travel & Garages Ltd

8,16, 25, 29, 35 and 53 seat vehicles  
Available for hire for all Occasions



- Airport and Seaport Transfers \* Weddings \* Day Trips \* Theatres \* Schools
  - \* Sporting Events \* Dog & Horse Racing Events \* Night Clubs
- Please Telephone 01299 270207 for a quotation

Visit our website [www.mawleyoaktravel.co.uk](http://www.mawleyoaktravel.co.uk)

## SPECIAL OFFER — MOTS £38 !!

Your Local Friendly Garage for Servicing and Repairs



**GREAT PRICES ON TYRES & EXHAUSTS,  
LASER WHEEL ALIGNMENT  
FREE MOT WITH EVERY FULL SERVICE**

Fuel Sales, Red Diesel, Gas Cylinders, Forecourt Shop, Mots, Repairs & Servicing, Exhausts, Special Offers on Tyres, Clutches, Shock Absorbers, Cam Belts, Diagnostics..

We offer a local collection & delivery service. Courtesy car available \* (\* conditions apply)

[www.mawleyoakgaragesltd.co.uk](http://www.mawleyoakgaragesltd.co.uk)

**Tel Cleobury Mortimer 01299 270207**



## LACON CHILDE SCHOOL

A Specialist Sports College  
Over 250 years of excellence in education



High academic standards  
Extensive range of  
Extra-curricular activities

Safe and Modern learning environment  
High standards of care and support  
Excellent pupil behaviour  
Outstanding sports facilities  
Idyllic setting



We can bring out the best in your child  
To find out more please contact the school.

Headteacher Mr Allan Gilhooley, BSc,  
Lacon Childe School,  
Love Lane,  
Cleobury Mortimer,  
Shropshire DY14 8PE  
Tel: 01299 270312

**More Than Just a School**  
'An outstanding school' Ofsted 2009

**Aches & pains? Lack of energy? Stressed out? Feeling down? Trouble Sleeping?**



Why not enjoy the amazing benefits and complete sense of wellbeing that regular Holistic Therapy Treatments such as Reflexology, Reiki, Aromatherapy, Indian Head Massage, Sports/Remedial Massage, Hot Stone Massage & Crystal Therapy can bring.



**With treatments starting at only £20, why just survive – when you can absolutely THRIVE?**



Louise has worked in the health & wellbeing industry for the last 16 years and is an experienced therapist based at Shirley's Hairdressers every Friday. Louise delivers bespoke, effective treatments tailored to your specific needs. For more information or to book an appointment please contact

**Louise Brown-Knott, F.F.H.T. Tel: 07932 551007**  
Holistic Health, Therapy & Training

Do you need a boost? Why not indulge yourself with a **FREE** Hand, Foot or Facial treatment to demonstrate to you the power of Forever Living Products? To book please call the number above.

[www.louisebrownknott.co.uk](http://www.louisebrownknott.co.uk)

# Clarion Clippings - The Local News

## FINE FLORAL TRIBUTE



This beautifully detailed floral copy of a Ferguson TE20 tractor was made by Rachael at Wild at Heart Flowers as a tribute to a local man. His family asked if it could be specially made, as his first tractor was a TE20 that gave long service, and in later years he bought an old example and had it restored as a reminder of those times.

## HAVE YOU TRIED?

We found some interesting local wines on sale at the Far Forest Countryside Show. They come from Rose Bank Vineyard at Fernhill Heath in Worcestershire.

There was a lot to tempt you at that show, so the remaining budget would only run to one bottle. We opted for 'Phoenix', a sparkling dry white that promised a slow, lazy summer evening in the garden. And so it proved, a smooth blend of flavours that gave only a gentle aftertaste and no trace of a headache next morning. We'll be trying that again.

To find out more about this young vineyard, only established in 2003, dial [www.rosebankvineyard.co.uk](http://www.rosebankvineyard.co.uk)

## PARTY NIGHT - EARLY NOTICE

This is early notice of a special Party Night on December 1st at

Kinlet's fine Village Hall. It's all about raising money for the Lewis Trust, which supports the Prostate Cancer Support Group in Kidderminster and Little Hearts Matter, whose involvement with the Robinson family at Mawley Farm Farm is well known.

Started by Rachael Ponsford in memory of her son Lewis, this remarkable Trust has so far donated over £19,000 to the two principal charities and other local causes. So an evening of fun in support of their work has got to be a great idea.

The evening features a band and disco and the ticket price of £20 includes buffet and drinks. Book yours through Rachael at 01299 841032 or Emma Haywood, 270137. You can also book online: [trustlewis@tiscali.co.uk](mailto:trustlewis@tiscali.co.uk)

## BOWLING NEWS

On August 25th the Annual Ladies Cup Single Competition saw seven ladies involved. The Finalists were Christine Lloyd, the Ladies Team Captain and Joan Griffiths and result was 20 points for Christine and for the winner, Joan 21.

On Saturday September 1st the Final of the Horton Shield Mixed Doubles was held. The four finalists were Christine Lloyd partnered with Stan Checkett and Lesley and Joe Burnside. The Winners were Lesley & Joe with 21 points and Stan & Christine with 3 points. Congratulations to Mr & Mrs Burnside.

A Semi Final and the Final for the Hodges Cup Over 70s Cup were played on September 2nd. The Semi Final was between Stan Checkett and Colin McMurray, Colin won, to play

Ken Reynolds in the Final, when the result was 21 points for Colin and 12 for Ken.

On Saturday September 8th the Mottershead Cup Triples Competition was played for. Five Teams entered, the competition started at 1400 hours and finished at approximately 1830. The two teams in the Final were, Chris Cowdell, Club Captain, Ivor and Paul Lloyd; against Brian Sheldon, Mick and Dot Davis.

The Winners were Brian, Mick & Dot, 21 points to 14. A good afternoon of bowling.

*Dave Harley*

## PRIZE WINNING EWES AT KNIGHTON



*From left: Andrew Bennett, judge Richard Lloyd, John Bennett of A T Bennett and Son and Jenny Layton Mills of McCartney Auctioneers.*

McCartneys report a good response to their first Multi Breed Show and Sale at Knighton, with first prize in the Pen of 20 Welsh Mule Ewes going to the entry from A T Bennett and Son of Bronvenel. This pen realised the top price on the day at £175 per head.

The average price for yearling ewes was £143.44 per head, and for ewe lambs £79.30. Top price for the latter was £145 per head for Purebred Texel ewe lambs from J P L Owen of Aberceithon.

# Good Food and Fine Fayre



## ADDISONS

### Opening times

**Lunchtimes:  
Wednesday to Sunday**

**Evenings:  
Tuesday to Saturday**

**53 High Street,  
Cleobury Mortimer.**

**01299 270389**

### EAT AND DRINK WITH FRIENDS

-----

For good food all made in house,  
Served in a warm convivial atmosphere

-----

Call in for a drink and try out our selection of  
Beers, lagers, wines and soft drinks

-----

Why not sample our Sunday Roast Dinner  
12 noon till 4pm

-----

Don't miss our monthly theme nights

-----

## THE FIGHTING COCKS

No1, High Street, Stottesdon, DY14 8TZ  
01746 718270

A delightful, friendly and unassuming village pub, serving excellent back-to-basics food, homemade from local produce. Fantastic real ales including Hobsons Best Bitter and Town Crier.

CAMRA listed

Home Made Pies a speciality  
Live Music Fortnightly on Saturdays -  
please ring for list of events  
Winner of Deliciously Shropshire Food and  
Drinks Award 2003/4 Pub Category

THE SHOP AT THE COCK attached to the pub  
Local produce. Meat, cheese, vegetables, juices,  
butters, smoked salmon, breads, fruits, tinned food  
and much more Come and see for yourself

## CROCS AWAY

*Hire of Crockery, Tableware and Catering Equipment*  
*From a teaspoon to a cooker, Collected or Delivered*

**TEL: 01562 863222**

FAX: 01562 863133

email: [hire@crocsaway.co.uk](mailto:hire@crocsaway.co.uk) [www.crocsaway.co.uk](http://www.crocsaway.co.uk)

Unit 2a Ricketts Close, Firs Industrial Estate, Kidderminster. DY11 7QN.

Part of Abraxas Catering equipment  
Your one stop shop for the sale and Repair of Catering Equipment  
Refurbished Equipment our speciality  
Showroom open Daily.



# Clarion Clippings - The Local News

## TOM'S ITALIAN TASK



*Tom Redfern in Cleobury RFC colours.*

Tom Redfern recently finished his time at Worcester Sixth Form College, emerging with a Triple Distinction in Sports Technology and the offer of a place at Cardiff University. But that plan was put on hold when he heard that in Brazil they were looking for players to promote rugby in schools as the 2016 Brazil Olympics loom on the horizon. At that time the new Rugby Sevens will be launched and Brazil are obviously looking to get their youngsters primed and ready.

He applied but didn't get an offer. But back at Worcester RFC, for whom he's played since his sixth form days, Tom learned that there were coaching places on offer in Italy. They wanted fly halves with a decent track record - he sent off his CV early in August and days later was asked to fly out for an interview.

At the beginning of September he flew out to join Mantova for a nine months contract. To keep his place at Cardiff he'll have to apply again in February and he hopes to take up that offer with some international play under

his belt. As his mum Clare Todd explained: "He realised that he'd need some active experience to get a job when he's got his degree, so he can add this to his CV."

Another Cleobury Mortimer native on the road to success.

## JAZZ AT ROCK

This is a treat for classical New Orleans jazz fans. The Limehouse Jazz Band, from Haarlem in Holland, will be playing in Rock's wonderful Village Hall on October 16th.

They've been before and come back in response to demand. If you want to know more about them, look in at [www.limehouse-jazzband.nl](http://www.limehouse-jazzband.nl)

Tickets are £6.00 and the local contact is Henk Buzink on 01299 832496. Doors open at 7.00 and the music starts at 8.00. Sounds like a great night.

## LAU BROTHERS LEAD AGAIN



*Brothers Steve (left) and Phil Lau, a formidable golf pairing.*

Sunday September 9th saw a Betterball Doubles competition at Cleobury Golf Club and the competition was as hot as the weather.

Local brothers Steve and Phil Lau continued their phenomenal run of success this year. With a total 8 under par finish they took their fourth doubles title at their home club.

## DODDINGTON FRIENDSHIP CLUB

Brian Draper MBE was our September speaker, his subject Ironbridge and Coalbrookdale, its river and people associated with the area.

He talked for an hour, without notes, which in itself is quite an achievement. With his dry sense of humour he had the audience in fits of laughter as he recalled the history of the river and how goods were transported to Bristol and then on to Europe.

He spoke of the men from the area, mainly Quakers, who were responsible for our bridges, canals and, of course, the famous Iron Bridge. A very interesting and entertaining afternoon and we look forward to seeing him again next year, talking about another area.

We meet at 2.00 o'clock every other Tuesday, at Doddington Village Hall. Visitors welcome.

*Alison Osborne*

## OPEN DOORS

Not quite a new idea, more an established one given a spring clean. It's a monthly gathering at the Market Hall, for any or all family members with young children or even those not yet born. First Wednesday each month, starting around 9.00 and ending around 11.00, but not governed by the clock. It will be downstairs, so access will be easy, and if you fancy a cuppa that's free too.

It's called Open Doors and replaces the Thru the Door idea that Gabrielle Eve ran for years. So here it is, after a wash and brush-up, the same friendly idea to get people together and talking. The first Wednesday this month is on the 3rd - why not look in and see what it's like?



We aim to source local produce wherever possible  
 Free box delivery in Cleobury area (£10.00 minimum)  
 Gift Hampers made to order  
 Fresh fish on a Friday and Saturday  
 Open Mon-Sat 9am-5pm  
 28 High Street, Cleobury Mortimer 01299 272886

**More of Those Very Handy Small Ads.....**

Gateaux Meringues Celebration Cakes  
 Sweet and Savoury Pastries and Treats

**The Indulgent Baker**

Cakes and Bakes for all occasions  
**Call Jackie: 07929 771 470**  
[www.theindulgentbaker.co.uk](http://www.theindulgentbaker.co.uk)



Local Produce, Plant Centre, health foods,  
 Delicatessen counter, gluten free products,  
 organic range, green grocery, and general  
 groceries.

Opening hours:  
 Mon—Sat. 8am-6pm,  
 Sun 9am-1pm

Tel: 01299 270 182  
 2/3 Talbot Square  
 Cleobury Mortimer,  
 DY14 8BQ

**THE WOOD FIRED PIZZA COMPANY**

AUTHENTIC WOOD-FIRED COOKING FOR SHOWS, FESTIVALS AND PARTIES



TO BOOK US FOR YOUR EVENT  
 PHONE: 01588 660812 (Graham Holt)  
 EMAIL: [woodfiredpizza@hotmail.co.uk](mailto:woodfiredpizza@hotmail.co.uk)

**Experienced teacher**  
**Key Stages 1 - 3, plus Special**  
**Needs. CRB Checked.**  
**Offers Tuition in Core Subjects**  
**plus ICT. Group Tuition can be**  
**arranged.**

**For further details, ring**  
**07577 864 350**

*htca* Accountants & Business Advisors

*Profit From Our Advice* 01299 272 200

- Payroll, bookkeeping, VAT, Cash flows
- Tax Planning, Inheritance, Wills
- Sage Sales and Training
- Established, Professional Service
- Large & Small Client Base
- Locally at your Office or Ours

Stapple Business Centre, Neen Savage, Kidderminster.

# Clarion Jobs - From Leominster Job Centre Plus

## LATEST VACANCIES

Tuesday 04.09.12

LEK/20786	Care Assistant	7.43 per hour	22.75 hours pw
LEK/20787	LGV Driver	8.00 – 9.00 ph	40 hours pw
LEK/20789	Kitchen Assistant	Meets NMW	33 hours pw
LEK/20790	Care Assistant	Negotiable wage	Various hours
LEK/20791	Waiting on staff	Meets NMW	20 hours pw
LEK/20792	Chef/cook	Up to 10.00 ph	16 – 40 hours pw
LEK/20795	Guest room cleaner	Meets NMW	15 hours pw
LEK/20798	MIG Welder	7.50 per hour	full time
LEK/20800	Senior Stylist	6.76 per hour	Part time
LEK/20802	Cleaner	6.08 per hour	7.5 hours pw
LEK/20805	Personal Assistants	7.95 hours pw	17 hours pw
LEK/20806	Domestic Assistant	6.08 per hour	10 hours per week
LEK/20808	Waiting staff	Meets NMW	2/3 days per week
LEK/20809	HGV Driver	Negotiable wage	42 hours per week
LEK/20810	Cleaner	6.08 per hour	10 hours pw
LEK/20811	LGV C + E driver	10.00 – 11.00 ph	Shifts TBA
LEK/20813	Care Worker	6.50 per hour	8 – 42 hours per week
LEK/20814	Care Worker	6.50 – 8.20 per hour	5 days out of 7
LEK/20815	Forward tipping dumper driver	9.00 per hour	days
LEK/20816	HGV Class 1 driver	Negotiable wage	60 hours per week
LEK/20817	Gas Engineer	23,339 – 25,816 pa	39.25 hours pw
LEK/20818	School Caretaker	7.63 to 8.00 per hour	20 hours pw
LEK/20819	Housekeeper	Meets NMW	12 – 20 hours pw
LEK/20820	Chef de partie	Negotiable wage	30 – 40 hours pw
LEK/20821	Office assistant	7.50 to 8.50 ph	12 hours pw

If you are interested in any of the vacancies for Herefordshire Council you can visit [www.herefordshire.gov.uk/jobs](http://www.herefordshire.gov.uk/jobs)

If you are interested in an Apprenticeship please visit [www.apprenticeships.org.uk](http://www.apprenticeships.org.uk) for further information and to view the vacancies in your area.

Find more vacancies by visiting [www.Indeed.com](http://www.Indeed.com)

### How to apply

To find out more information about all vacancies being advertised via Jobcentre plus please contact Jobseeker Direct – call **0845 6060 234** to access our phone service which is provided to help you find a full or part time job. Lines are open 9am-6pm weekdays and 9am-1pm Saturdays  
Textphone service for deaf and hearing impaired people: **0845 6055 255**

To see full job details visit the [Jobcentre Plus Website](http://Jobcentre Plus Website).  
[www.direct.gov.uk/jobsearch](http://www.direct.gov.uk/jobsearch)  
Simply enter the full job reference (listed above) in the field at the foot of the webpage e.g. **LEK/19000**



Including Jobcentres and Social security offices

## Volunteer Position at Nineveh Ridge Care Farm Come and help us grow vegetables!

We have wonderful raised beds, full of muck and ready to plant, plus a large poly tunnel sitting and waiting. We would love someone to join our enthusiastic team and show us how it's done !

You will get a lovely home cooked meal every day and work with great people.

You can grown your own veg to take home, work on your own or help teach our clients. We're flexible and very friendly

For more information please contact

**Pippa Bannister Tel : 01299 832864**



**HOME REARED BEEF, PORK, LAMB AND MUTTON. OUR HOME CURED BACON, SAUSAGES, BURGERS, ETC. MAWLEY MILK, CHEESE, HAMS AND PICKLES, ALL IN OUR FARM SHOP**  
**TELEPHONE 01746 718732**  
**OPEN WEDNESDAY TO SATURDAY**  
**8.00am TO 5.30pm**



## The Cleobury Country Centre

Courses running in Oct/Nov

Book Now >>>



- Food Hygiene Level 2 Course - 16th Oct, 9am—4pm
- First Aid Requalification - 22nd & 23rd Oct, 9am—4pm
- First Aid at Work Course 3 day - 19th, 20th & 21st Nov, 9am—4pm

Tel: 01299 272 300

Email:

business@cleoburycountry.com.

www.cleoburycountry.com

The Cleobury Country Centre,

Love Lane, Cleobury Mortimer,

DY14 8PE

(Adjacent to Lacon Childe School)

**Free Business Networking** —Wed 17th Oct, 6pm—8pm, held at The Cleobury Country Centre. An opportunity to get Cleobury & surrounding areas doing more business!

## THE CRUSTY COB

### BAKERY, SANDWICH BAR AND TEAROOMS

Wide range of fresh bread supplied daily, including speciality items

Freshly made sandwiches to take away

Award winning pork pies from Reg. May

Large selection of cakes and confectionery

Telephone orders taken; Delivery service available; Outside catering

**Open from 8.00am to 5.00pm, Monday to Saturday**  
**18 Church Street, Cleobury Mortimer Tel: 01299 271190**

## WORLDWIDE TRAVEL

Some of our up and coming overseas holidays and expeditions



livetheadventure.co

### Exclusive Drangme Chhu River Exploratory Expedition, Bhutan, 1st - 15th November 2012

This expedition offers a unique opportunity to experience one of the last wilderness river descents in Asia. Opened recently this multi day river trip has only had a small number of descents through one of the most isolated regions in Bhutan. For rafters no previous experience is required however a reasonable level of fitness and a positive attitude are a must.

### Nepal Adventure, 31st March - 13th April 2013

Fantastic multi themed trip suitable for all ages and abilities offering an adventure of a life time. One of our most popular itineraries includes a stunning trek in the Annapurna region, a stay at one of the top venues in Chitwan National Park on safari and then finishes at an idyllic riverside resort for some white-water rafting. Combine all of this with lots of opportunities to immerse yourself in the Nepalese culture and traditions.

For full details please visit our website [www.livetheadventure.co](http://www.livetheadventure.co) or call us to book or for more information on **01746718436**

*All of our trips are fully escorted by our highly experienced professional guides employed by Live the Adventure, providing the best possible safety standards and ensuring high quality adventure experiences to all of our customers.*

## **Good Food and Fine Fayre**

### *Ashley's Bakery*

Supplying fresh bread from our Cleobury bakery daily at:

Ashley's Bakery (Tenbury)  
Cleobury Cafe  
Talbot Stores  
Clows Top Post Office & Stores  
Shop at the Cocks  
Far Forest Stores (Londis)  
Highley Village Butcher's  
The Deli (Bewdley)

Also available.....  
Bakery Direct to the Trade  
Outside Catering &  
Mobile Catering Units

For more details  
Call 01299 271 283  
High Street,  
Cleobury Mortimer  
(Est. 1988)

### *Cleobury Cafe*

**Breakfast, lunch and afternoon tea  
available 7 days a week**

**A hot & cold takeaway service**

**And the bakery Dept.**

**Selling Ashley's bread & cakes**

**Grab lunch on the run and**

**pre-order on...01299 271 517**

**High Street  
Cleobury Mortimer**

**Mon—Sat 7am—5pm  
Sun 8.30am—4.00pm**

## Nineveh Ridge Farm - A Very Special Place

The first problem is finding the place. The sensible will probably spurn the satnav's advice, and listen to telephone directions very carefully. If you rely upon the electronic device and its GPS sources, good luck and don't believe directions to drive through any river.

A local of 33 years standing, I drove happily down the Bayton road, took a wrong turning down a charming gentleman's drive and disturbed him reading the Clarion! Thank you for your redirections, sir.

Up the road, a small wooden sign says you've arrived, and off the narrow lane is room to park. Kit Bodenham was working with a group of youngsters, but broke away to show me to the Lunch Cabin. It's the social hub of the 48 acre farm, where clients and volunteers mix in a friendly atmosphere. Every staff member and established volunteer wears a tee-shirt with their first name on the breast. No Mr or Mrs, just the first name; it sets the tone for the day.

This 48 acre farm has been Mark Bannister's home for a long time, joined by Pippa 13 years ago. Today the work on the farm is mixed with caring for a mixture of clients, ranging from recovering drug and alcohol abusers through mental health patients to disabled.

The farm works with a range of bodies, including Remploy, Worcestershire Council, a number of special needs schools and residential homes. The aim is to help people recover and if possible progress to holding down a job. The measure of what they achieve is called the Social Return on Investment,

and Worcester University has examined what they do and put that Return at £3.86 for every £1.00 the wider community invests. Try getting that value from a financial institution.

Much of the land is given over to areas where clients are taught to grow produce, tend animals or produce basic farm implements and facilities. In the Lunch Cabin, a mighty impressive and spacious shop and eatery, cooking and serving is handled by clients. The vegetable stew and pizza slice for lunch was delicious and you can see why the place is happy for hungry visitors from nearby Bayton to drop in for lunch.

As space is absorbed by areas for skills to be taught and practised, the new buildings are nearly all constructed by the clients, working under supervision. The Big Society is a much abused phrase today, but what you see here is a large number of people - the mix changes day by day - being nurtured by volunteers who may be recovered clients or retired craftspeople happy to stay active. So the Big Society can work.

Pippa describes herself as a volunteer: "This is my passion," she explains. "I'm very fussy about my staff. We pay an absolute pittance and you've got to be passionate to work here. But it is a lovely place to be." In fact the pittance pay comes as clients develop and look to move on and find work, a sign of the care working.

You can believe that she's passionate, but for a volunteer she does have a very effective way of asking people to do jobs. And she has a constant job of chasing any grants on offer.



*Pippa and Mark Bannister on the arable area, where Mark will use that antique seed spreader to plant the next crop. Their tractor is a classic gem, too.*

What drives Pippa seems to be her positive approach to any little problem that comes her way. Like cash-strapped councils unable to pay a driver to bring clients to the farm; she had one of the volunteers trained to do the job and the problem was solved. But she did draw the line at paying to have someone else's bus MoT'd - they were persuaded to do it themselves. Gentle but no pushover, that's her.

"Everyone here is a square peg who can't fit into society's round hole," she explains. "They help one another feel needed. It gives them their square hole."

Music figures large in the day and Pippa talks about an epileptic lad dancing. "The volunteers watch him and catch him if he falls. It's a balance of risk and enjoyment, managing risk rather than refusing to take it on."

This enthusiasm is catching and there are some highly qualified people giving their skills for very modest rewards.

*Continues on Page 15.....*

## Nineveh Ridge - Continued

Like Tracy Rochelle, whose qualifications are miles beyond the Nineveh pay bands, but whose principles bring her here, helping to set up a charitable arm of the operation to help the constant pursuit of funding.

Tracey is also the worker behind the neat Skills Day leaflets that detail the many areas of training available and the cost for a taster, a day or for a full course.

And like recent recruit Kit Bodenham, with a very particular story. "I was working in Carnaby Street after leaving uni and wanting more than a job in the music industry.

"I came back to Cleobury not certain what I wanted next and read about Niveneh Ridge in the Clarion. It was exactly what I was looking for - I like working outdoors and using my hands."

"I worked here one day and walked home with a smile on

my face. Even in the winter it's quite a nice half an hour's walk, and wakes you up for the day."

"I had no qualifications, but from the first day I got instruction and was shown how to adopt a gentle approach. In the eyes of a normal employer a load of qualifications is what you want, but when a bus load of severely autistic kids arrived I realised that there are other skills that you need to look after them."

He's learned fast and Pippa is full of praise for his manner: "It doesn't matter if there are people with very demanding needs, Kit just takes a friendly approach and gets on with everybody."

There's a pointer to the success of this place in that praise of one of her staff. Pippa Bannister wins loyalty and confidence with her ability to bring out the best in people with praise and persuasion. It works well.



*Kit Bodenham quit London, found Nineveh and contentment. Result.*

You come away from Nineveh moved by the realisation there are still people who want more from life than money. That may be its greatest achievement.

*Jim Reynolds*

**Nineveh Ridge Care Farm.**  
**Telephone:01299 832864**  
**[www.ninevehridgecarefarm.org.uk](http://www.ninevehridgecarefarm.org.uk)**



# WOODTAPPER WOOD WORKS



Doors & Windows   Staircases   Kitchens  
Conservatories

Tel: 07968396338  
07930337932

E-mail: [woodtapper@hotmail.com](mailto:woodtapper@hotmail.com)

# COMPUTER REPAIRS NEW NUMBER:

## 01299 832 723

### SOFTWARE

- VIRUS / SPYWARE REMOVAL FROM £33
- PC MOT CLEAN UP, FROM £48
- WINDOWS INSTALLATIONS
- WINDOWS 7 UPGRADE
- SOFTWARE FAULT RESOLUTION

### HOME VISIT, AVAILABLE

During office hours  
LOCAL RATE;  
£10 call out charge  
£25 per hour

### HARDWARE

- DIAGNOSIS, REPAIRS & UPGRADES
- LAPTOPS & DESKTOPS
- LAPTOPS SCREEN REPLACEMENT
- SALES OF TAILOR MADE PC.

### IPHONE REPAIRS

- CRACKED OR BROKEN SCREEN
- NO SOUND, REPLACEMENT BATTERIES etc
- AND ALL OTHER PROBLEMS DIAGNOSED

### Apple Mac REPAIRS

- iMAC, MACBOOK, DESKTOPS, OS PROBLEMS
- Memory Upgrades, Replacement Hard Disks etc

FIND US ON THE MAIN  
A456 BETWEEN CLOWS  
TOP AND MAMBLE

Upper Moor End Farmhouse,  
Mamble, DY14 9JD

Opening Times:  
Monday to Friday,  
9.00am - 6.00pm

[www.computerrepairsmbable.co.uk](http://www.computerrepairsmbable.co.uk)



Livery



Riding Lessons



Hacking

01299 270 417 / [www.6ashes.co.uk](http://www.6ashes.co.uk)

## Love Cleaning

Domestic & Commercial Cleaning Services

Do you hate cleaning or just do not have the time.....?

Then why not leave it all to Love Cleaning the  
Domestic and Commercial cleaning specialist  
in your area

Daily, Weekly and Fortnightly cleans  
to suit your requirements  
Fully Insured

Tel – 01299 272954  
Mob – 07920 754900  
Email – [sarah@lovecleaningltd.co.uk](mailto:sarah@lovecleaningltd.co.uk)

Call for a free no obligation quotation

# Top Totty

Specialising in stylish & elegant outfits from prom to mother of the bride,  
with a wide range of designers, for all occasions. Sizes 6-18.

Co-ordinating accessories - fascinators, jewellery, handbags,  
glamorous bra straps

Sandra Gittins  
Upper Bransley Farm  
Cleobury Mortimer  
Kidderminster.

Gift vouchers also available

Tel: 01299270457  
Mobile: 07976714739  
Email: [toptottdresses@hotmail.co.uk](mailto:toptottdresses@hotmail.co.uk)  
[www.toptotty/cleoburycountry.co.uk](http://www.toptotty/cleoburycountry.co.uk)



## The Cleobury Fringe - A Curate's Egg?

Two weeks of the Cleobury Fringe started on September 1st, with an established favourite. Beer and Brass blended well on the Rectory Field, with Cleobury Concert Brass leading the way and guest bands adding variety. Catering was looked after by the KA Krew, with a range of beers and ciders to wash the food down. No other caterers had booked in, which did rather limit the choice.

The atmosphere was really warm and friendly when we arrived, after the long trip around delivering the latest issue to all our distributors. There was a mixture of music between the brass ending and the comedy beginning, outstanding amongst them the sound of mandolins that soon had people singing along.

We didn't stay for the comedy session - well past our bedtime - but heard that it included one performer stripping naked and doing something with a firework that cannot be described in a family newsletter. If it was meant to help clear the place, reports suggest that it worked and a lot of people walked out. Comedy - good idea. Over the Top Rudeness - not funny.

Sunday the 2nd saw the finals of the Hobson's Pub Cricket League on the Sports Field. It was Cleobury Mortimer versus The Plough at Claverley and with 84 runs off the standard 12 overs, Cleobury looked to be in a good position.

Then the Claverley batting strength was let loose and hammered Cleobury's bowling over every boundary. They were a class act and the coup de grace was mercifully quick. The

title went to The Plough at Claverley.

The Hobson's League seems to be a good idea, but it is hard to find. The Clarion has never been sent information about it!

The Borders Classic Bike Show had a new organiser this year, and David Spruce added some interesting touches. Last year's experiment of firing up racing bikes didn't go down quite so well with the neighbours this year. One man's music is another man's cacophony.

Guest of Honour was ex world speedway champion Peter Collins. What a charming, modest man he is, who drew crowds that remembered him at his peak. Entries from as far as South Wales and Merseyside put on a display of 106 bikes, all profits from the weekend going to the community's Lacon Childe School.



*Three of the concours winners at the Show line up with trophies.*

The unsung heroes of this show are the school staff and parents who work in the kitchen and do a job that their customers warmly praise. It all resulted in over £5,000 made for the school.

The final day, Saturday the 15th, offered the Antiques Roadman giving valuations at the Parish Hall, where the attendance fell some way short of several. We shut up shop early, John Carter leaving a notice that he was available at home, and he ended the day

valuing a 1930s Swiss made record player disguised as a box camera. What's more, like a Swiss watch it was still working.

Across the road at the Market Hall, a mix-up over the date got only a handful of people out to see Robert Swift's baking demonstration and the show didn't open. Rather sad for such a talented man.

Saturday evening rounded off with the draw for the raffle. Not one of the four big prizes was claimed on the night, but Rachel at Carrot Tops was in for a big surprise on Monday morning. She was told she'd won a ride in the racing Honda Civic around Oulton Park with Parish Council chairman Sean Thorogood at the wheel. Quite an Action Man is our chairman.

Once the draw was over, the fireworks on Clavers started and the crowd along the path past the church had a grandstand view for ten superb minutes. As Jo Booton put it: "You're never too old for fireworks," and the applause from the assembled crowd was a tribute to that sentiment.

Congratulations to Bob Hayward of Crusty Cob who did the deal with contractors Nightworx Pyrotechnics of Telford and put on a great show.

So where is the Cleobury Fringe going? Without Geoff Hainsworth's efforts it wouldn't happen, and the man needs more support and some new blood with fresh ideas. As a vehicle to encourage visitors it's a good idea, but unless it gets active support and new events to promote, it won't grow. And if you don't grow, you are in danger of fading away.

STAY AT HOME—HOME SUPPORT.....ARE YOU IN NEED OF SUPPORT WITH BASIC DAY TO DAY TASKS?

SHOPPING-CLEANING-GARDENING-DOG WALKING-PETCARE-COMPANIONSHIP-ATTENDING APPOINTMENTS-SUPPORT SERVICES-COMPLETING FORMS-ATTENDING SOCIAL EVENTS-RESPIRE WITHIN OWN ENVIRONMENT-ASSISTANCE DURING NIGHT-ASSISTANCE DURING DAY-OTHER SUPPORT SERVICES AVAILABLE ON REQUEST

ALL STAFF ENHANCED CRB CHECKED WITH OVER 13YRS EXPERIENCE AND TRAINING  
WITHIN THE LOCAL AUTHORITY CARE SECTOR

FOR A CONFIDENTIAL, NO OBLIGATION CHAT REGARDING YOUR NEEDS PLEASE CALL OR EMAIL

SUSAN  
01299 270675  
07969 673092

LIZ  
01299 271623  
07826 929222

Email: [stayathome-homesupport@live.com](mailto:stayathome-homesupport@live.com)

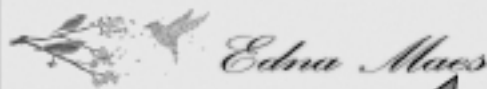


# Elite Mowing Services

Professional, Fast & Trustworthy Service

Grass Cutting, Lawn Seeding, Tree & shrub Care, General Maintenance

Call: 07582 841349 or visit our website: [www.elitemowingservices.co.uk](http://www.elitemowingservices.co.uk)



Cut and Blow Dry ~ £26.00  
Dry Cut ~£17.00  
Blow Dry ~ £14.00  
Gents Cut ~ £10.00  
Colour of Top Section ~ £25.00  
Half Head Colour ~ £35.00  
Full Head Colour ~ £45.00  
Full Head Tint ~ £35.00  
Roots Colour ~ £20.00  
Treatments ~ £5.00  
Putt-ups starting from ~ £15.00



Special Offer for  
Tuesdays & Thursdays  
£19.00 cut & blow dry  
With Gemma

Call us on  
01299 272697

7 Talbot Square,  
Clebury Mortimer,  
DY14 8BQ

Opening times:  
9.30am to 5.30 Tues-Thurs  
12 noon—8pm Fri  
9am—4pm Sat

# architecture and design



a local, eco-friendly designer with over 30 years experience, offering sympathetic solutions to new homes, extensions and barn and loft conversions.

From Sketch Designs to Planning & Building Regulations Applications.

Nic Brown BArch.,

The Farm, Oretton, Clebury Mortimer. DY14 0TA

tel: 01746 718624

mobile: 07706 994301

e-mail: [nbarchdesign@btinternet.com](mailto:nbarchdesign@btinternet.com)

# The Severn Edge Vets Pets Page

A lot of you will have guessed that this article has been prepared well in advance for the October Clarion. As you read this I hope to be relaxing somewhere on a beach, holding hands with my new wife, a cocktail in the other hand and the sunshine beating down! Terrible, I know!

Throughout September we have been busy at our Bewdley surgery, seeing lots of new faces, and some familiar ones walking past the door. You are more than welcome to pop in if you are passing, to see how proud we are of the new set up.

As if planning a wedding wasn't enough this month, we've had another issue with our fish tank at home. Having lived four years with an external canister filter doing all the hard work and keeping the water lovely, it decided to spring a leak over the last month. I can't say when this happened; I should have realised when the level in the tank started to drop, but it was only on discovering a wet bottle of wine from under the tank that we noticed a problem.

Fish tanks have very important internal eco-systems, involving bacteria that digest the waste products the fish excrete; the filter is the main reservoir for all of these bacteria. Replacing the entire filter with new sponges and filter media removes all the good bacteria that have built up in the old filter. Take advice from your fish supplier on how best to re-start the eco-system, but the advice offered to me was that as long as you only changed one thing (the filter) and left the old water, and old gravel in place, then the new filter would sort itself out and quickly start working efficiently. If changing the water, and gravel as well, or starting a new aquarium, then you need to start the eco-system with a clever bacterial soup that you can buy at any good fish shop. I must stress that I am not a fish vet, merely an amateur coldwater fishkeeper. Please seek all fish advice from your local professional aquatics shop.

Enough about fish, back to dogs and cats. October will see Halloween costumes, and fireworks re-entering the shops for all to see and buy. Most fireworks will not go up until Guy Fawkes Day, but there now seems to be about two weeks when people are setting off something. While most dogs are generally only mildly affected, there are a lot of pets that are petrified by the noises and smells. You are not alone if your

dog, or cat urinates or defecates in terror, or simply finds a place to hide until the noises stop.

This must be a frightening time for them, and we would like to help any animals that have trouble coping. Throughout October we are offering free clinics to talk through ways of helping, and easing the stress on your pet. Pick up the phone and book your free appointment now. The Nurse will chat with you about the problem, and we will do our best to improve things for you and your pet. 01299 271967. If your pet needs to come in to see a Vet in order to have some medication, then the Nurse will advise you of this, and make you an appointment.

Fleas have been a terrible problem these last couple of months for lots of pets. We have plenty of advice and will endeavour to help you to clear the infestation as soon as we can. Often in these cases we have to recommend a spot-on flea treatment that is only available through vets. We can supply this product to any pet that we have seen at a Severn Edge clinic in the last year (as long as we can be sure we have an accurate weight recorded for them), and the reception, nursing, and vet team will be happy to advise you on the best way to use flea treatments, and other measures that you can use to clear the problem from your pets and house as soon as possible. Please don't be shy, come in and chat to our team, and we will be happy to help you.

Take care; hope to see you soon,

*Jeremy Hall BVMS Hons MRCVS.*

**Severn Edge**   
VETERINARY GROUP

*24 hour emergency care  
provided by our own veterinary surgeons*

Clebury Mortimer	01299 271967
Bridgnorth:	01746 763998
Bewdley	01299 409157
Kinver	01384 873660

*Other branches across Shropshire*

**Equine** 01584 841080

**Farm Animals, Commercial & Small holders**

Clebury Mortimer:	01299 271537
Bridgnorth:	01746 713911
Much Wenlock:	01952 727371

[www.severnedgevets.co.uk](http://www.severnedgevets.co.uk) 

**Wild At Heart Flowers**  
Tel 01299 272638 during my working hours  
Or 07526 283377 outside hours

**WEDDING FLOWERS**

*Thinking of booking your next years Wedding -  
Then now is an ideal time to sort your floral requirements*

**SPECIALIST FUNERAL DESIGNS**

**Your ideas—My Help!**

**Large Portfolio of previous commissions available to view**

*My working hours are Mondays, Tuesdays, Thursdays, Fridays 8:30am to 5:30pm  
and Saturdays 8:30am to 1:30pm*

*However you can Pre Order by Telephone or in the shop for collection during Garage Hours  
Mon—Friday 7:30am to 6:00pm and Sat 8:00am to 6:00pm*



Please visit my Florist Shop situated at Mawley Oak Garage, Ludlow Road, Cleobury Mortimer.  
Bespoke Hand Tieds

10% Discount off Church flowers with help and advice on selection and arrangement

We stock a varied selection of cut flowers, pot plants, bedding plants, glassware, vases, basket ware, gift boxes And many flower arranging items.

Free Parking

All Major Credit and Debit Cards Accepted



## Cleobury Garage

Repairs to all vehicles including motor bikes  
M.O.T.s on cars, small vans & motor bikes

Now under new management  
so give Deg or Marie a ring on  
01299 270 352

15b High Street,  
Cleobury Mortimer.  
DY14 8DG

Your local friendly Garage offering MOTs on Sat morning



Special rates  
when you book MOT  
& service together



## Gilbert Carter

Specialist Joinery

- Built in Wardrobes
- Double Glazed Wooden Windows
- Staircases
- 

Email:gilbertcarter007@btinternet.com

01299  
270626

Qualified tradesmen, fully insured

## **Bayton - A Happy and Peaceful Place for Children**

**THE PRIMARY SCHOOL. In a gentle rural setting and grounds. Ofsted 2011: 'Good with Outstanding Features.' Head Teacher: Avis Pounder 01299 832393**



On Saturday, October 13th there will be an Open Day at Bayton C of E Primary School, whereby prospective families can visit the school to look around and meet our staff. The school will be open for families to visit

from 10.00am until 1.00. Also during this time, our independently run, on-site nursery, Little Learners will be open. Children can start at the nursery from the age of two, and it has funded places for children from the term after their third birthday. Little Learners is open all year and offers before and after school care as well as holiday clubs for children from 8.00am until 6.00. For further information about our school, please contact us on 01299 832393 or visit our website at [www.baytonpri.worcs.sch.uk](http://www.baytonpri.worcs.sch.uk).

**THE LITTLE LEARNERS NURSERY. Ofsted Report 2011: 'Outstanding.'**  
**Open 8.00 to 6.00, 50 weeks a year, children from 2 years. 2-11 Holiday Club.**  
**Call Stacey or Jemma on 01299 832855**

I have recently read in one of the Early Years periodicals that research in America has shown that working mothers are more likely to feed children ready meals, increasing their risk of obesity.

I question whether the British culture is of the same mind? I would like to think not, however looking in other people's shopping trolleys maybe we ought to start thinking what could we do to ensure a healthier way of eating. Especially with the younger generation, as this will mould their eating habits for life.

The author of the piece (Katy Morton) identifies that the university in America that carried out the study suggests that schools should shoulder a greater burden for supporting healthy life styles. I feel the burden should lie with the families more as they are the one who are the first educators of their children. I agree nurseries, pre-schools and schools should also practice awareness of healthy eating and exercise in order to live a healthier lifestyle.

Long before this report I would like to think Little Learners Nursery had this model in place. We do provide hot lunches which are home cooked from scratch using fresh, local ingredients where possible. We also provide a good variety of snacks and teas for nursery and school aged children who attend our clubs after school or during school

holidays. Cooking activities are always popular with the children of all ages in the Nursery and Holiday clubs where the staff consider many savoury dishes for children to make and not just the usual biscuits or fairy cakes. This encourages not only self help and awareness but covers personal and social developmental areas, mathematics and communication opportunities. Fun activities in our large rural garden provide plenty of challenges to promote both mental and physical stimulation, in addition to this a large playground can be used for activities which need hard standing e.g. ride on toys. Our Forest School can be used to provide a complete morning of outdoor activity and once children are more experienced in this environment, cooking is also a part of this area, over a camp fire!

I understand that parents who work may use ready meals and takeaways to provide their families with food that may be quicker and easier to put on the table. However, I do feel that well balanced meals are also as quick to prepare and serve as ordering a takeaway in some instances. I feel sure there are plenty of families in this country who agree with my thoughts, and have a high standard in providing their children with a positive healthy start in their lives with good food and exercise.

*Judith Bunn*



## FLOWERS BY FIONA

19A High Street. Tel: 01299 272 995

**Bouquets & arrangements from traditional to contemporary,  
prepared especially for you by a fully experienced florist (est. 1990)**

Specialist in weddings & funerals at competitive prices

(Home visits if required)

Plants, gift vouchers, incenses, candles & balloons

Florist sundries available to order or stock

FREE DELIVERY WITHIN CLEOBURY

UK deliveries available

### What's in your drinking water?

Many prominent scientists are alarmed by the content of some drinking water and actively seek to change the processes involved. The practice of making water safe to drink actually involves adding large amounts of extremely poisonous chemicals to it. Key scientists are now providing evidence that long-term ingestion of small amounts of chemicals like these could be the cause of some major health problems. Here is a list of just a few of the chemicals routinely added to our water supply:

- **Liquified chlorine**
- **Fluorosilicic acid**
- **Aluminium sulphate**
- **Calcium hydroxide**
- **Sodium silicofluoride**

Even if the water leaves the source in a relatively clean state, don't forget that your water travels through pipes, which may have been underground since Victorian times. It is almost impossible for the water not to become contaminated by something undesirable.

**Contaminants in Tap Water** Tap water is treated with a large number of chemicals in order to kill bacteria and other microorganisms. In addition, it may contain other undesirable contaminants like toxic metal salts, hormones and pesticides, or it may become contaminated by chemicals or microbes within pipes (e.g. lead, bacteria, protozoa).



Call **CytoDoc** today for advice on affordable pure water systems from £135  
**01299 271836** [www.cytodoc.co.uk](http://www.cytodoc.co.uk)

Edwin Harris & Sons – Funeral Directors

1, Crane Street, Kidderminster Worcs DY11 6XT

Kidderminster Office: 01562 822625 /823570

Stourport on Severn: 01299 829873

We are a well established independent family run business covering all areas of Worcestershire & the West Midlands. Circa 1897. Advice always available. Home visits arranged as required.

E-mail: [contactus@edwinharris.co.uk](mailto:contactus@edwinharris.co.uk) Visit our website: [www.edwinharris.co.uk](http://www.edwinharris.co.uk)

## Happenings on High Street

### FAREWELL TO HEMS



Steven Hems (right) with assistant Rob as people will remember them in the shop. (Rosemary Thompson pic)

What a shock it was to hear that Stephen Hems had decided to close the family butcher's shop. That little place with the legendary queues that stretched down the street at Christmas time.

Steve always had good quality meats available, and his ham was the best tasting you could find around here, as was his bacon. There was banter and laughter in the place and if he hadn't sold out of his pork sausages before you arrived, you knew you were in for a treat.

"We've been here as a family business 59 years, but it's been a struggle for the last 15," Steve explained, "We've just been treading water and couldn't see the sense in throwing money at it

any more. It was pretty difficult telling people we were closing, because there are customers who first dealt with my grandad, with my dad and then with me."

That's a landmark gone from the street. It will be missed.

### "WE'RE JUST PUTTING SOMETHING BACK INTO THE COMMUNITY"

That's a very noble sentiment, simply put and sincerely meant by Mr Sanghera, head of the family who have run Cleobury's Spar Store for more than 20 years.

He was explaining the work that will soon be done on the Church Street shop that has been such a vital supply point for this community more than 20 years.

The shop front was upgraded a while ago, as part of the Town Centre Enhancement Scheme. To follow that through and offer a whole new level of convenience shopping, the internal fittings will be overhauled, ready for a brand new store for you to do your vital Christmas shopping.

Yes, we know most of you buy your sophisticated Christmas pressies through Amazon or whoever. But when there's a panic in the kitchen on Boxing Day morning because you don't have some vital ingredient, there's one place you can go and

get it right now. Not posh, certainly friendly and always open when you need them, that's the Sanghera family at Spar.

### THE VACANT FOUNTAIN

Louise, who seemed to be happy and making a success of running the Royal Fountain, has moved on. Apparently running a pub was never her ambition and she and her son have headed south to look for other challenges. We wish them both the best of good fortune.


The closure of the pub means that the Ladies Luncheon Club has moved on. From October 9th they'll be found at The Crown in Hopton Wafers.

And we look forward to seeing one of the most characterful pubs around here open again.

### THE FLICKS FLICKERED

The September 'Flicks in the Sticks' wasn't the usual smooth presentation. It seems there'd been some work done on the roof and the vital lines for the big screen were disturbed.

So the Parish Hall committee have come up with the common sense solution of showing the September scheduled "Salmon Fishing in the Yemen" this month and "The Artist" will be the feature next month. Salmon Fishing in the Yemen does sound intriguing..



Registered  
Technician

30546

## JOHN VAIL


Plumbing, heating and bathrooms  
Installation of boilers, cookers and gas fires  
In homes, park homes and caravans  
Boiler servicing and landlords' certificates

**GAS                      LPG                      OIL**

Gas Safe and OFTEC registered

**07971 624804                      01584 890946**

**johnvail123@btinternet.com**



536724

**More Clarion Smalls. No Big Company Policies Here,  
Just Local People Willing to Help**

**ALAN PRICE DIRECT TRAVEL**

PRIVATE HIRE TRAVEL

AIRPORT TRANSFERS

LOCAL & LONG DISTANCE,



COURIER SERVICE

FRIENDLY & RELIABLE

FULLY COUNCIL LICENSED

Tel: 01584 890014  
MOBILE: 0773 3079679

**GARDEN • GROUNDS  
& PROPERTY  
MAINTENANCE**

Reliable, conscientious, productive service.  
References available.

Call Tom now **07779 32 86 92**

**Ever After**



Day Nursery  
Cleobury Mortimer

Please contact us on 01299 272 777  
Or Call in to see us anytime.  
Friendly, Caring Environment for the Community

**BALDWIN'S BOOKSHOP**  
*booksellers & publishers*

Books bought and sold  
New books obtained to order  
Booksearches executed  
Photocopying service

24 High St - Tel (01299) 270110  
email: [books@mbaldwin.free-online.co.uk](mailto:books@mbaldwin.free-online.co.uk)  
open: Wed 2-5; Sat 10-1, 2-5  
*Members of the Cleobury Mortimer Chamber of Trade*

Call for a free quotation



**COUNTRY SKILLS**  
CPCS/NPTC Approved - Fully Insured

Outside renovation, Tree Surgery, Hard Landscaping, Slabbing and Fencing, Decking, Roofing, Contract Mowing.

**Roger Price and Sons**  
Mobile 07967 140720

tender times

Tender Times Grave Care offers a friendly, professional grave maintenance service.  
Daisy Cottage, 5 Collybrook Park  
Knowlbury, Ludlow SY1 3LW

Telephones: 01584 891777 or Mobiles  
07794 629 457 or 07528 722 295

Your contacts: Julie Oliver or Roger Price

Soft Furnishing and Interior Design Services



**Masquerade**  
Fabrics Limited  
01299 271 680

36 High Street Cleobury Mortimer near Kidderminster  
Worcestershire DY14 8DQ

Retailers for Sanderson, Harlequin, Monkwel, Crowson and many more..  
Comprehensive design, measuring and fitting service

**LOWER STREET GARAGE**

Cleobury Mortimer Tel: 01299 270208

SERVICES & REPAIRS FOR ALL MAKES OF VEHICLES

M.O.T. TESTING

FAULT DIAGNOSIS - CAM BELT SPECIALISTS  
EXCELLENT TYRE/EXHAUST PRICES

FOR EFFICIENT, RAPID & FRIENDLY SERVICE  
CONTACT US NOW!





## Star of the Small Ads - Liz Vanegas de Quickenden



*She works from the family home, the wall beside her desk covered with hats worn by her and relatives.*

Liz Vanegas came to England in 1993 and married Jerry Quickenden, the engineer she'd met in Mexico City. In 1997 they moved to Cleobury Mortimer to settle down to family life and don't show a sign of moving on. Their home is a warm, welcoming place with family photos and mementoes all over the place.

Liz herself reflects that happiness in her personality; the smile is almost a permanent fixture. In 2000 she trained as a Holistic Therapist at Worcester College and has gathered other natural healing skills since. Now she can offer Reiki, aroma therapy, Balinese therapy, hot stone massage and the latest,

Pinda Karma. She's tried that last one for it herself, with its hot stones and bags stuffed with herbs for massage. "It's amazing, the detoxifying effect," she enthuses.

Liz works from home, with customers spread as far as Craven Arms, Stourbridge, Kidderminster and Bridgnorth. Some are regulars, others come to see her only because they have injuries and want pain relief. "I don't get many people with sports injuries, they're mainly farmers," she explains. And single men must come with a reference from a known customer; there's another interpretation of massage that offends this well brought up Catholic girl.

She uses only the best quality oils for massage: "What I'm putting on your body, I'm putting into mine because I rub it into my hands," she reasons. "If you use cheap oils, you're not giving the patient proper treatment." She estimates her working life as a therapist at 20 to 25 years, because of the cumulative effect of the oils, particularly where she may add something like black pepper to give warmth to treat an injury.

She is a recently qualified First Responder, because she knows from the loss of her own two year old Joey 14 years ago how

critical it is that treatment is given quickly. Something the ambulance service cannot guarantee in rural areas like this. She recently had a call to help an 88 year old man who'd fallen in the bath; she was there in three minutes

She spent some years as a volunteer at Birmingham Children's Hospital, teaching parents how to give their children massage that may help. Not a woman motivated by avarice.

With her life as a therapist half way through, someone with such energy and drive must be looking at an alternative. "I'm a community governor at Lacon Childe School, where my youngest son Ross has just started. I'm also doing photography courses."

Her son Mikey plays rugby and she volunteers her photo skills to the clubs and teams he plays for. With his progress, she's moved on up to the West Midlands and Worcester teams, her action shots adorning their websites. Does she still enjoy this range of things? "If I didn't enjoy it, I wouldn't do it," she answers.

She's very much part of the community where she's found so much happiness. And she's on the Cleobury Country Shop and Save Scheme card.

*Liz Vanegas de Quickenden*

IIHHT, VTCT

Holistic Therapist

- ✦ Aromatherapy
- ✦ Balinese, Hot-Stones & Pindakarma Massage
- ✦ Reiki

Mobile: 0779 059 2631



  
Logs West Midlands

Why not buy your winter supply of firewood now to guarantee starting the winter warm with seasoned logs.

- Seasoned firewood ready to burn •
- Kindling • Heat Logs • Range of Coals •

Established Firewood Supplier  
Delivered or collected (from yard on Saturdays)  
Firewood cut to size required

Contact  
Logs West Midlands  
01299 250380 or 07736 250414  
[www.logswestmidlands.co.uk](http://www.logswestmidlands.co.uk)

**Clarion Smalls - Local Skills, Knowledge and Value.  
Private Businesses Giving Great Service.**

**Will Price Stockman & Shepherd**



All stock professionally trimmed & prepared for show and sale  
No job too small

Email: [sheepywill@hotmail.co.uk](mailto:sheepywill@hotmail.co.uk)  
Mob: 07516 455152

**CLEOBURY NEWS**  
20 HIGH STREET, CLEOBURY MORTIMER  
TEL: 01299 270279  
**CLEOBURY'S ONLY  
DELIVERING NEWSAGENT!**  
HAVE YOUR MORNING OR EVENING  
NEWSPAPER  
DELIVERED 7 DAYS A WEEK.  
ALSO FOR STATIONERY, TOYS, CARDS,  
SWEETS, TOBACCO AND THE LOTTERY

**HIS & HERS**  
*Dog Grooming Parlour*

All breeds and  
Cross breeds professionally  
Trimmed and Groomed



**J. A. Guest**  
Tel: 07790 796 027

**E. PURSLOW & SON LTD**

- ◆ Stone, Gravel, Cement Supplies
- ◆ Approved Coal Merchant
- ◆ Calor Gas Stockist
- ◆ Tarmacadam Specialists
- ◆ Car Parks and Driveways Constructed

**01299 270 314**  
Pinkham Lane, Cleobury Mortimer

**gh home & garden services**

**CRB** painting & decorating  
**Checked** garden maintenance  
lawn mowing  
hedge cutting  
landscaping  
log splitting  
Fully Insured  
Call Graham on  
07500 527878 or 01588 660812





Email: [Tim.Giles@dhjh.co.uk](mailto:Tim.Giles@dhjh.co.uk)

*a refreshing change in accountancy*

We are a long established firm of Chartered Certified Accountants working in the local community.

For help with all aspects of accounts and tax, contact **Tim Giles FCCA** or **Celia Potter** for a free initial meeting.

**Tel: 01584 811686**  
81 Teme Street, Tenbury Wells. Worcs. WR15 8AE

**GRANITE KITCHENS**  
BY **FONTOURA WORKTOPS Ltd**  
of **LEOMINSTER**

BESPOKE KITCHEN & BATHROOM DESIGN  
GRANITE, MARBLE, SLATE & QUARTZ

**Tel: 01568 612871**  
**Mobile: 07738 934354**  
[www.fontouraworktops.co.uk](http://www.fontouraworktops.co.uk)

**NO TIME TO DO THE  
WASHING?**

LET ME, THE IRON LADY, TAKE THE STRESS AWAY AND DO IT FOR YOU!  
MY IRONING SERVICE HAS BEEN ESTABLISHED FOR TEN YEARS AND NOW I AM OFFERING A WASHING AND DRYING SERVICE, TOO.  
ALL WITH VERY REASONABLE RATES.  
FOR MORE DETAILS ABOUT MY COMPLETE LAUNDRY SERVICE, CALL ME ON 0779 281 3774

## Letter from Westminster - Philip Dunne MP



Last month was unusual for Westminster, as the Government had its first substantial reshuffle of portfolios after two and half years in office. The Prime Minister appointed me as Minister for Defence Equipment, Support and Technology, a Parliamentary Under-Secretary of State in the Ministry of Defence, with responsibility for defence procurement and defence exports.

This came as a big surprise, but it is a great privilege to be asked to serve our Armed Forces. They are the pride of our nation and it is an honour to be given responsibility for ensuring they are properly equipped for the often dangerous and always demanding tasks we ask of them.

These remain difficult times for the economy, and Defence must continue to play its part in addressing this. Great strides have already been made. An overheated equipment programme and an out-of-control procurement budget have been reined in and we have a deliverable path to equip our forces for the role envisaged in the strategic plan known as Future Force 2020. My task will be to drive this forward.

It is already clear to me that we need to continue to improve our performance in procurement. So transforming defence procurement is one of my main priorities. We

must have the most effective and efficient system to ensure the Armed Forces get what they need, when they need it, at best value-for-money. I have also been entrusted with promoting responsible defence exports. Defence exports play a critical role in the UK's defence policy and objectives as well as making a significant contribution to national prosperity and growth.

There are hundreds of thousands of jobs all around the country, including in Shropshire, involved in supplying our Armed Forces with everything from food to fighter-planes. In my first week in my new role, I visited one of the world-class engineering facilities in Lancashire which builds submarines. I was there for the departure of HMS Ambush, the second of the Astute class submarines to its base on the Clyde for sea trials before entering operational service with the Royal Navy next spring.

I was told this is the most complex man-made piece of engineering equipment in the world, more complicated to design than the space shuttle. It was humbling to meet some of the 5,000 engineers involved in building these submarines and the crew of HMS Ambush who have responsibility for bringing it into service.

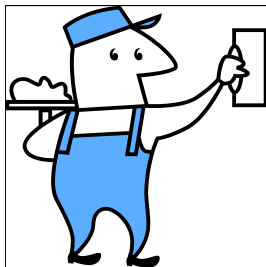
There is a steep learning curve for me, in getting to understand the capabilities required by our Armed Forces. But I look forward to working closely with service personnel, civil servants and the defence industry in helping to deliver what they need, and also to help Britain punch above its weight in export markets.

*Philip Dunne MP*

**Missed your copy of The Cleobury Clarion?  
Knowing that many readers have busy lives that can't  
be ruled by the simple matter of picking up your  
newsletter, we've put it out on the internet.  
Just type in [www.cleoburyclarion](http://www.cleoburyclarion) on the  
4th of the month.**

# The October Social Calendar

Date	Time	Details	Contact	Telephone Number
Tue 2	2.00pm	Doddington Friendship Club, Village Hall. Speaker Linda Worthy on Jewellery.		
Wed 3		The Royal British Legion are off to Bristol, to visit Brunel's 'SS Great Britain'.		
	11.00am	Carers' Drop-in Surgery, The Library, Love Lane	Wendy Duley	CM 270562
	7.30pm	The History Society meets at Neen Savage Village Hall		
	8.00pm	Whist Drive, Doddington Village Hall	Sonia Pearsall	01584 890874
Thu 4		GREEN WHEELIE BINS EMPTIED TODAY		
Sat 6	10.00am	Horticultural Society's Autumn Plant Sale, Market Hall, Church Street		
	8.00pm	Autumn Fun Night at Kinlet Village Hall, in aid of RSPCA Kidderminster branch. Tickets:	Anne Himsley	01299 841270
Sat 6/ Sun 7	10.00am	Apple Weekend at Berrington Hall. Apples to see and buy, cider making demonstration and food stalls.		01588 615721
Sun 7	11.00am	Farmers Market in Load Street, Bewdley. On Harvest Festival Weekend, it must be a good time to how good this market is.		
Mon 8	8.00pm	The Horticultural Society meets in the Methodist Hall, to hear all about composting.		
Tue 9	7.25am	St Mary's Breakfast Club gather at Lacon Childe School. Speaker: Dr Mark Baldwin on cycling from Bletchley to the Eiffel Tower.		
	12.30pm	Ladies Luncheon Club meet at The Crown, Hopton Wafers.	Alison	01584 890414
	7.00pm	Cleobury WI hold their AGM in the Parish Hall,. Guest speaker will talk on "Curiosities of Shropshire"		
Wed 10	8.00pm	The Royal British Legion meet at The Bell Inn, Lower Street		
Thu 11		BLACK WHEELIE BINS AND RECYCLE BOXES EMPTIED		
	7.00pm	Harvest Festival Service, St Mary's Church		
	8.00pm	The Parish Harvest Supper, St Mary's Church		
Fri 12	8.00pm	Bingo Night at Cleeton St Mary Village Hall, in aid of Hall funds		
Sat 13	7.30pm	Flicks in the Sticks at the Parish Hall, featuring 'The Artist' Admission £4.00 and £3.00, refreshments available.		CM 270830
	8.00pm	The Dutch Limehouse Jazz Band entertain with their New Orleans sound at Rock Village Hall. £6.00 on the door. SEE PAGE 9	Henk Buzink	01299 832496



## S & P PLASTERERS

- ALL ASPECTS OF PLASTERING WORK COVERED
- BUILDING WORK UNDERTAKEN
- BATHROOM & KITCHEN FITTING / TILING
- FLOOR TILING
- ROOF REPAIRS
- GUTTERING & FACIA REPLACEMENT
- POINTING
- SLABBING

CALL NOW FOR A FREE NO OBLIGATION QUOTE.....07721 783696 or 07885 504703

**The Clarion is on the web every month from the 4th**  
**[www.cleoburyclarion.co.uk](http://www.cleoburyclarion.co.uk)**  
**Don't miss a word - it's all there at the touch of a button**

## The October Social Calendar - continued

Date	Time	Details	Contact	Telephone Number
Tue 16	2.00pm	Doddington Friendship Club have a Beetle Drive in the Village Hall		
Wed 17	7.30pm	History Society Open Evening, Neen Savage Parish Hall. Talk: "Not just the history of a house, but a social commentary, too." SEE PAGE 33.		
	8.00pm	Whist Drive, Doddington Village Hall. See 3 <sup>rd</sup> above	Sonia Pearsall	01584 890874
Thu 18		GREEN WHEELIE BINS EMPTIED		
	7.45pm	Whist Drive at Sports & Social Club, Love Lane	Alan Evans	CM 270114
Fri 19	8.00pm	Bingo Night, Doddington Village Hall. See 3 <sup>rd</sup> above	Sonia Pearsall	01584 890874
Sat 20	10.00am	Cleobury Patients' Voice Coffee Morning, Market Hall. All proceeds to the Carers Group and CPV.		
	10.00am	Open Morning at Kinlet CE Primary School. Their neighbours at the Family Playgroup will also be open. SEE PAGE 5.		
Mon 22	6.00pm/ 8.00pm	Open Evening at Kim Stanley's Health and Beauty in the High Street. All welcome. SEE PAGE 47.		
Wed 24	7.45pm	Clows Top Gardening Club, Victory Hall. Dr Mike Jones talks on Mistletoe		
Thu 25		BLCK WHEELIE BINS AND RECYCLE BOXES EMPTIED		
	12.00pm	Cleobury WI's Winter Warmer Lunch in the Parish Hall, with home made soups and sweets available.		
Sat 26	7.30pm	The Royal British Legion have a band concert and Fish and Chip Supper in the Parish Hall, Church Street.	Ron Breakwell	CM 270830
	8.00pm	Bingo Night, Doddington Village Hall. See 3 <sup>rd</sup> above.	Sonia Pearsall	01584 890874
Sat 27	8.00pm	Clee Hill Royal British Legion Prize Bingo. Clee Hill Village Hall. All proceeds to the Poppy Appeal.		
Sun 28	6.00pm	Firework Display at Berrington Hall, nr Leominster on A49. Refreshments available from 4.00 if you want to visit the Hall before the display		01588 615721
		<b>AND LOOKING AHEAD TO NOVEMBER....</b>		
Thu 1		GREEN WHEELIE BINS EMPTIED TODAY		
Thu 1/ Sat 3	7.30pm	Cleobury's excellent Players are at Lacon Childe School with their production of Peter Gordon's 'Murdered to Death'. SEE PAGE 35.	Tickets	CM 271754
Wed 7	8.00pm	Whist Drice, Doddington Village Hall	Sonia Pearsall	01584 890874



# SKELLERNS

## DOORS & WINDOWS



- UPVC Fascias & Guttering
- UPVC Windows, Doors, & Conservatories
- General home improvements
- Re-roofing & general building
- Replacement Glass
- Patio jet washing



**Free No-obligation quote. FENSA registered company with years of experience**  
 Call Mike on 01746 718188 or mobile: 07814 577739  
 The Old Police House, Stottesdon, Cleobury Mortimer, DY14 8UE

**The Clarion Social Calendar - so much information about what's on in Cleobury Country and around. If you want your event in these pages, get details to the editor by the 20th of the preceding month.**

### Heath Close • Cleobury M'tr

Detached three bed house located in a sought after location. Accommodation comprises kitchen, lounge, wc, three bedrooms and family bathroom. Single garage and driveway parking. Garden. Oil fired central heating and double glazing throughout.



### 4 Silvington Hill • Cleobury M'tr

Rare opportunity to acquire two detached properties 'Rose Cottage' and 'The Oak Barn'. Rose Cottage is a three-bedroom cottage full of character and charm. The Oak Barn is a quaint one bedroom property. Sitting in approx 1 acre to include a paddock and out buildings.



### Worthmoore • Mamble

Spacious three-bedroom bungalow set in a lovely village location. Generous gardens with a greenhouse, driveway parking and double garage. Worthmoore has a master bedroom with ensuite, separate utility, open fireplace in the living room, oil central heating and is fully double glazed throughout.



### Edgeway Cottage • Cleobury M'tr

Delightfully situated equestrian property on the fringe of Cleobury Mortimer, so very convenient to the town with approximately 4 acres, stabling and ménage. Stone built residence offers traditional 4 bed accommodation in very good order throughout.



### Overdale • Clows Top

Quaint semi detached cottage located in a small rural village. Well presented throughout, this three bedroom home has a number of attractive features including an inglenook fireplace in the lounge and an open fire in the dining room. Kitchen with Rayburn and utility room. Garden and parking.



### Mount Orchard • Tenbury Wells

Three bedroom extended bungalow set in a quiet cul de sac location. Driveway parking, private rear easily maintained gardens with patio area. Tenbury Wells is a thriving market town offering local shopping, numerous leisure facilities.



### April Cottage • Tenbury Wells

Located in a popular residential area April Cottage is a detached two bedroom bungalow offering spacious accommodation within close proximity of the centre of Tenbury Wells. Having a garage, driveway parking, pretty gardens to the front and a generous rear garden with an orchard area.



### 22 Barnfields • Cleobury M'tr

Detached family home located in desirable area, with a very impressive size garden. Spacious accommodation comprising two receptions, kitchen / diner, cloakroom, master bedroom with dressing room and en-suite. Three further bedrooms, family bathroom and double garage.





# Kinlet Family Playgroup

We are a small, happy, caring playgroup set in beautiful grounds. We have modern educational facilities and are OFSTED registered 'Good'. We care for children between the ages of 2 & 5yrs. We have 15 hours of funding available for 3 & 4 yr olds.

**Little Tiddlers** • Thurs Morning 9.30 - 11.30 For Children from Birth with their Parent/Carer £2.50 per family.

**Flexible session times**  
Monday - Friday  
9am - 3.15pm  
(Term time only)

Registered Charity No. 1037214 School Lane, Kinlet DY12 3BG • Enquiries 07794 166 514 • [www.kinletfamilyplaygroup.co.uk](http://www.kinletfamilyplaygroup.co.uk)

## Paul Harding



## Tree Services

- Tree surgery and felling
- Woodland thinning & maintenance
- Hedge trimming & grass cutting
- Supplier of hardwood logs, kindling and garden bark

• NPTC certified fully insured. Domestic and commercial work undertaken.

**Tel 01584 890 993 Mob 07970 878 224**

# ANDREW JELLEY OPTICIANS

Andrew Jelley BSc (Hons) FC Optom  
Teresa Davies FBDO  
Duncan Edwards FBDO  
Alex Lane BSc (Hons) MC Optom

14 Teme Street, Tenbury Wells, Worcestershire, WR15 8BA  
tel: 01584 811445 email: [enquiries@andrewjelleyopticians.co.uk](mailto:enquiries@andrewjelleyopticians.co.uk)  
[www.andrewjelleyopticians.co.uk](http://www.andrewjelleyopticians.co.uk)

# BOOKS BOOKS BOOKS

14 teme street TENBURY WELLS

books bargain books  
cd's art materials dvd's  
and more...

**01584810060**  
[www.booksbooksbooks.co.uk](http://www.booksbooksbooks.co.uk)



**Aspire**  
**Make an appointment  
with Style!**  
**01299 271026**  
**[www.aspire-gowns.co.uk](http://www.aspire-gowns.co.uk)**

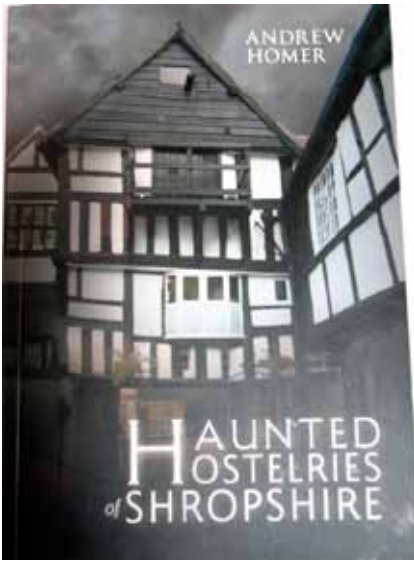


**Evening/prom/weddings/races/parties/daywear/cruises/hats**



# Clarion Clippings - The Local News

## BOOK REVIEW 'HAUNTED HOSTELRIES OF SHROPSHIRE'



An intriguing book, written by Andrew Homer, who specialises in tales of ghosties and ghouls that are said to appear in the present day.

He found a lot to write about and photograph in Shropshire, 66 places in all, including the National Sports and Conference Centre at Newport, though it's actually the old Lilleshall Hall that boasts a ghost. The Sports Centre occupies part of the old Hall grounds.

The Talbot Hotel is Cleobury's entry, with its secret tunnel from the cellar supposedly to the Parish Church, though it's long been blocked off and the tale is based upon local legend. Even better is the suggestion that the tunnel actually extended to Mawley Hall once upon a very ancient time. There is a ghost recorded in the place, name of Mary.

Up on Clee Hill, Shropshire's highest pub The Kremlin Inn gets an entry. With its many hundreds of years of digging and mining, a fatality would be no surprise and a lingering presence predictable.

This is a fascinating work that could give you some sport as you tick off the names and record any out-of-body meetings in the ancient inns.

It's published by Amberley, priced well at just £12.99 and we're sure Mark Baldwin in the Book Shop could get it for you. Just quote ISBN 978 1-4456-0201-1.

### CLEOBURY W.I.

We started our September meeting presenting £400 to The Severn Hospice, our chosen charity for the year; Gayna Woodland received the cheque. We raised this money by holding our famous soup lunches and coffee mornings. Next year's chosen charity is The Nightingale Nurses.

Our speaker this month was Mrs Pat Davids who gave us a really interesting talk about the bulb fields of Holland plus the history of the bulb. The slide show was a personal one to her and her late husband and were a show of colour and design. After viewing the slides she held a competition, asking six questions on her talk and the quickest to answer won a prize. A very jolly evening.

Mrs Davids went on to judge the Flower of the Month, won by Jenny Vanderhook and the prettiest Floral Card won by Jill Chesterman.

We wish to notify ALL PAST MEMBERS OF CLEOBURY MORTIMER W.I. that we will be celebrating our 90th BIRTHDAY PARTY on Tuesday December 11th, 7.30 pm at the Parish Hall. Anyone wishing to attend or knowing someone who would like to attend please ring our President Mrs. Jill Chesterman on 271671 so

that she can send them an invitation.

New members or visitors will be welcome, just turn up on the second Tuesday of the month at the Parish Hall. Our next meeting will be our AGM on October 9th at 7.00pm. Our speaker will talk on Curiosities of Shropshire. *Angi Gregory*

### THE HISTORY SOCIETY

**An invitation to the Society's latest Open Evening:**

Today's system of house ownership registration is fast and efficient, but loses the wealth of detail that was incorporated in old deeds. Sadly, many old deeds have been lost or destroyed.

In an office clear-out, a bundle of deeds relating to the New House, off the Tenbury Road was found. They cover the period 1738 – 1918 and offer a fascinating insight into the mechanism of transfer, ownership of the house and the people involved, with a hint of intrigue and mystery.

The next of the Cleobury Mortimer & District History Society's open evenings will feature an illustrated talk by Robert Hodge on what we can learn from a bundle of old parchment.

These open evenings are very popular. Come along to Neen Savage Parish Hall, where there is ample parking, on Wednesday October 17th for 7.30pm and hear this interesting story. Admission is £3.00 for non-members and includes refreshments.

### SILLY BITS

'Teamwork is a lot of people doing what I say.'  
'Four out of three people have trouble working out fractions.'

# Clarion Clippings - The Local News

**THE UTILITY WAREHOUSE**  
 Authorised Distributor



## Distributors Wanted

Run your own business without the usual risks.....  
 And help people save money!

- Choose your own hours
- Full training and support
- Up-front bonuses
- Earn a second income
- On-going commission
- No stock to carry

*Join one of the fastest growing markets in the UK!*



**Find out more! 07949 369968 [www.earnguru.co.uk](http://www.earnguru.co.uk)**



## State Registered Podiatrist (Chiropodist)

**E.J. Robinson** S.R.Ch.,M.Ch.S.,DPod.M.,R.G.N.(np)

Home Visits

3 years full time training, over 20 years experience,

HPC Registered

Tel: 07855 929263

Email: [ejr103-podiatry@yahoo.co.uk](mailto:ejr103-podiatry@yahoo.co.uk)

## BLOCK<sup>3</sup> ARCHITECTS

Clee View Baveney Wood Cleobury Mortimer Kidderminster Worc

Whether it is a new build project, conversion or extension we provide creative and sustainable architectural design solutions from sketch design to completion

If you require assistance or advice on any building or planning related matter, please feel free to call me



Tom Rogers

BA(Hons) Arch PG(Dip) RIBA



T 07812 196 967



E [tom@b3a.co.uk](mailto:tom@b3a.co.uk)

W [www.b3a.co.uk](http://www.b3a.co.uk)



SHROPSHIRE QUADS is a small family run business based in Neen Savage. We specialise in the sale, service and repair of quad bikes.

We are authorised Kymco quad bike dealers.

Full range of Kymco quad bikes available, childs 90cc up to a fully equipped 450i farm bike.

Please do not hesitate to give us a call for advice, further info or to book a demo.



07904 484 492

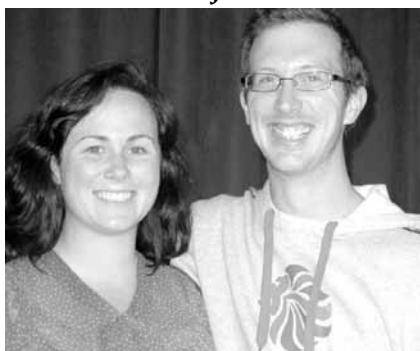
[www.shropshirequads.co.uk](http://www.shropshirequads.co.uk)

[dave@shropshirequads.co.uk](mailto:dave@shropshirequads.co.uk)



## Clarion Clippings - The Local News

### SAINT MARY'S YOUTH PROJECT



*Off to Oxfordshire and a new life.*

*Max and Kirsten Lambourne*

The Youth Project said goodbye to two valued volunteers in September. Max and Kirsten Lambourne have left Cleobury for Oxfordshire, where Max will study at Rippon College, Cuddesdon, taking their theological course and training to become a priest. He and Kirsten will be sorely missed.

Max has helped with the Youth Project for four years, supporting Mark Greaves. He worked as a Forest School Leader, Kirsten at the Pioneer Centre. They married in Australia last year, where Kirsten was raised and her family still live. At a morning service St Marys Church congregation and well wishers sent them off to a new life with love, good wishes and a pile of books for the course work.

### NEWS FROM THE LIBRARY

**Victoria Alexander writes from the Home of Books on Love Lane;**

The library hosted its 'Wrap Party' for 28 children who took part in this year's Summer Reading Challenge. Author Eddie Sayers was there to give each child their well earned medal after reading six books over the holidays. 'Sweet

News' in Ludlow made up party bags full of jelly snakes, popping candy and flying saucers that put a huge grin on all the little faces and hopefully will help secure a good sign up next year. Both children and adults were impressed with party entertainer 'Pickle-Lily' who used a combination of magic and fun games to ensure we would remember this year's event.

The first 'Speaker of Interest' has been booked. This retired police officer promises a rare insight into a career in the force, spanning 37 years. He also spent time as an Intelligence Officer and has been part of the Royal Protection Detail amongst many other duties things he has agreed to speak about, within the realms of the Official Secrets Act.

He has also worked as a lecturer, so our little library is extremely lucky to have him. His wit and engaging character will ensure an unmissable evening, together with a photo Power Point presentation, so I would encourage anyone with an interest in attending to get in as early as possible. I will be putting tickets out at a nominal charge of one pound, to include refreshments.

The evening will be at the library on November 12th at 7.30pm. Don't be disappointed, book early!

The library telephone number is CM 272301.

*Vicki Alexander*

### GUEST SPEAKERS

#### AVAILABLE

Marie Curie Cancer Care has speakers available who are eager to come and talk about the work of the charity and local Marie Curie Nurses.

If you are a member of a club, group or society please mention at your next meeting that we would be delighted to come and visit.

We understand that spaces at meetings for speakers are booked up quickly but do please contact us if you have a cancellation or for the following year's agenda.

Please contact Richard Scott on 0117 942 7132 or richard.scott@mariecurie.org.uk for further details or to book a speaker.

#### PLAYERS DUE TO PLEASE

Cleobury Players are staging 'Murdered to Death' by Peter Gordon on November 1st to 3rd at Lacon Childe school, at 7-30pm. A hilarious spoof of an Agatha Christie whodunit, we have a bumbling police inspector, Steve Foster, playing the lead role among others all involved when the owner of a country manor is mysteriously murdered. It soon becomes clear that the murderer still hasn't finished.

This comedy will amuse all ages, and give a light-hearted evening's entertainment. A bar will be available, plus soft drinks. Tickets will be £8, and £7-00 for concessions available from 01299 271754. Come and enjoy yourselves.

*Judy Reid*

# KNOWLE SPORTS ASSOCIATION

## WANTED!

**DONATIONS OF:** 3 piece suites, tables, chairs, gardens tools, wardrobes, bedside cabinets, chests ladders. All clean and good condition, please.

**ALSO:** Clothes, shoes, handbags, books. If not sold, they are recycled.

Everything is sold at our regular sales:

Thursday 10.00am to 1.00pm and Saturday 8.00 to 11.30am

All proceeds to Knowle Sports Field, Clee Hill

Enquiries: 01584 890644 or 800066. Furniture collection: 01584 891249

## THE FLICKS ARE BACK! AT CLEOBURY MORTIMER PARISH HALL

### 'FLICKS IN THE STICKS'

**7.30 SATURDAY OCTOBER 13th**

-----  
**'SALMON FISHING IN THE YEMEN'**

The showing of this appealing and unusual film is due to an equipment breakdown at our September Flicks Night.

**Admission £4 and £3; Family Ticket £8.00**

-----  
**The Parish Hall - Best Value Venue in Town.  
Bookings: Dave Short at 01299 271070**



**We Gleam**

WE GLEAM is an established carpet & upholstery cleaning service based in the Wyre forest area. We pride ourselves on offering a high quality cleaning service to both domestic and commercial customers. If you've got a stubborn, unsightly stain on your carpet or upholstery call us - the specialists.

Unlike some companies, we use only the most advanced quick-drying carpet soil extractors.

- \* Local Family Run Business
- \* fully trained with years of experience
- \* stainshield-treatments available
- \* we move all furniture
- \* hundreds of satisfied customers
- \* commercial work undertaken.

CALL PETE 07961712683  
Wegleam4@gmail.com  
www.wegleam.co.uk

## Clive Davies' Westwood Diary

In the end it's all about this balance thing. One of the biggest factors that appears to be well out of balance just now is land value. More and more plots of land and complete farms for that matter are making up to and around £14,000 per acre. This makes for a fast upward trend. Of course, not all land is the same. Some land can grow potatoes, carrots and cauliflower, in other areas five acres are needed to maintain one hill-type ewe, but it's all proportional.

The main feature is that the land is unaffordable in comparison to what it can produce. In many cases it is 'outside' funding that is pushing these increases. But, not only is this incoming finance driving land sale values but rental levels alongside. Therefore, more than ever before, it is vital that every area of land produces all that it sensibly can. This whole situation is a major reason for increased food supply costs and so it is imperative that the balance between costs, production and affordability are settled.

For those wishing to engage in agriculture, land acquisition is a major challenge. Land and finances are issues, community spirit is another. This has been well demonstrated with our haymaking campaign. Tom and I made a decent effort but we could not have completed a busy week's work without some much appreciated help. Our troubles stemmed from a series of breakdowns. Firstly the tractor played up. We

had hydraulic problems and with all good intentions Bob Crump of Clifton was unable to permanently sort it and so with a couple of efforts to acquire the correct pipe work, finally Richard Cole got us moving in the right direction.

Our long-time neighbours the Jones family of Lower Moor End came to our assistance with help to complete the mowing work. Paul and Kim Hinwood of Withypool were generous in helping us out with a hay tedder as ours was in no fit state to do the job and John Griffiths of Plowstall stood-by ready to help-out. Gerald and Mark Lewis of Far Forest were so inundated with work that they were unable to get along with their baler as they had often done in recent years, but very fortunately John Farley and his machine were able to bundle-up what will be some useful winter feed.

We have some 250 bales to clear into sheds and so it will be all hands on deck to complete the job before the autumn weather makes things difficult. So whilst usually now, most farm tasks are carried out in a fairly solitary mode and that often the 'everyone to the pump-handle' is now not so commonplace, our experience is different.

At any possible time our community spirit is not dead, it's well alive. With lots of help this year's haymaking is done, as for Westwood, that's the end.

*Clive Davies*



### Red Kite Pest Control

&

Wildlife Management

*Combining Tradition and Innovation*

For all your local Pest Control requirements ~ BPCA and NPTA Qualified ~ NPTA Member  
Humane, Environmentally responsible methods  
Individual Treatments ~ Flexible Contracts

**All Insect pests ~ All Rodent pests ~ All Wildlife pests**

Free Advice ~ Free Initial Survey ~ Free no obligation Quotations  
Specialised Trapping Service ~ Pest Prevention ~ Proofing ~ Cleansing ~ Decontamination ~ Disinfection

Telephone Andy Staples on: 07977 044987 / 01886 832730



# BoomeranG

of Cleobury Mortimer  
private hire travel

- Friendly, reliable service
- Local & long distances
- Fully council licensed (up to 12 passengers)
- Airport transfers
- Courier service
- All occasions catered for

Tel: 01299 271257, Mob: 07411 142755, Email: [stuart.boomerang@yahoo.co.uk](mailto:stuart.boomerang@yahoo.co.uk)

## Newbridge Computer Services Tel: 01299 270701

- ★ Want a new computer?
- ★ How to set it up?
- ★ Worried about what you need?
- ★ How to transfer your data?

**Well help is at hand!**

We offer a complete service package with all our new computers to ensure you get exactly the right system, at the right price and completely hassle free from start to finish.

**Buying a computer system from us couldn't be easier!**

Also:

Spares & Repairs  
Internet Connection  
Security: Anti-virus etc.

Suppliers of  Computers

E-mail [mike@ncs-tech.co.uk](mailto:mike@ncs-tech.co.uk)

And:

Call out & onsite Repairs  
Accessories  
Wired & Wireless Networks

website: [www.ncs-tech.co.uk](http://www.ncs-tech.co.uk)



[www.jillskeepsakes.co.uk](http://www.jillskeepsakes.co.uk)  
[enquiry@jillskeepsakes.co.uk](mailto:enquiry@jillskeepsakes.co.uk)  
01299 272936

**Luxury Handcrafted Personalised 3D  
Cards, Gifts, Wedding Stationary and  
Keepsakes**

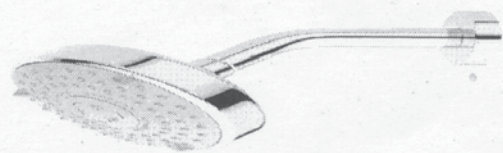
**Are you looking for a luxury card that is a little bit out of the ordinary ?  
Stuck for a gift idea - looking for something truly personal and individual ?**

Visit our website for beautiful luxury handcrafted cards, gifts & keepsakes for every occasion that will be treasured forever. Or pop into to meet me at 2A Lion Lane Cleobury Mortimer where you can select from my handcrafted cards or we can discuss your special tailor made luxury card or gift.



**For a complete bathroom installation:**

**Help & advice when designing  
All Plumbing Work  
Full refits or repair work to a high standard  
Professional Wall and floor Tiling**



Call for a free quote - highly recommended-References available and work is guaranteed

**FOR A BATHROOM TO BE PROUD OF! CALL REVIVE : 07971 361901**



# Cleobury Mortimer Primary School

We are a school with strong local community links

## OFSTED SAYS:

- Highly committed leaders and managers
- Pupils achieve well because they are well taught and have positive attitudes to learning
- Pupils enjoy lessons, behave well and say learning is fun
- Good care, guidance and support provided for individuals
- Strong team of staff and governors
- Exciting topics
- High proportion of pupils take part in extra curricular activities

## CONTACT DETAILS

**Cleobury Mortimer Primary School**

Love Lane, Cleobury Mortimer, Nr Kidderminster,  
Shropshire, DY14 8PE

Tel: 01299 270313

Email: [admin.cleoburymortimer@shropshirelg.net](mailto:admin.cleoburymortimer@shropshirelg.net)

Website: [cleoburymortimerprimaryschool.ethink.org.uk](http://cleoburymortimerprimaryschool.ethink.org.uk)

## Another Page of Clarion Small Ads. The Local People Who Bring You Service and Value

Secretarial  
Office  
Solutions



Word Documents, Excel Spreadsheets, Audio,  
Powerpoint Presentations, Event Organising,  
Administration

Contact Carol Franklin on Mobile: 07870 930562  
Email: info.carolfranklin@gmail.com  
for a first class solution to your office needs

### Guitar Tuition

- ◆ Experienced tutor based in Stottesdon.
- ◆ Teaching for 15 years privately and in schools.
- ◆ One to one or shared lessons, friendly, relaxed environment.
- ◆ Member of the Registry of Guitar Tutors and Musicians Union.
  - ◆ All ages, styles and abilities welcome.
  - ◆ CRB checked, full liabilities insurance.

Contact: MARK.CHECKLEY@sky.com  
01746 718636 - 07708 386433

### 24/7 ROOFING & GUTTERING SERVICES

THE SPECIALIST ROOFING COMPANY  
EST. FOR OVER 30 YEARS

- ✓ CHIMNEY & LEAD WORK
- ✓ FELT ROOFS
- ✓ TILING
- ✓ ROOF CLEANING
- ✓ FASCIA BOARDS
- ✓ SLATING
- ✓ SHEET ROOFING

ALSO SPECIALISING IN:

- ✓ GUTTER CLEANING
- ✓ GUTTER REPAIR OR RENEW
- ✓ RESIDENTIAL OR COMMERCIAL
- ✓ FREE NO OBLIGATION QUOTES
- ✓ DISCOUNTS FOR OAP'S
- ✓ REFERENCES Available

TEL: 01584 878728 MOB: 07977 560 763



TEL : 01746 861111  
Mob : 07876406616  
Email : ceholford@aol.com

### C.E.HOLFORD Electrical Services

DOMESTIC / INDUSTRIAL / COMMERCIAL  
INSTALLATION & MAINTENANCE  
INSPECTION & TESTING

All work guaranteed and insured

### Cleobury Mortimer Carpets

26 High Street, Cleobury Mortimer

**01299 270095 or**

**07739 186 163**

Supply and fitting of Carpets,  
Vinyls and Natural Floorings



### Serendipity Beauty Rooms

Beauty and Holistic therapies

Specialist Guinot salon, aromatherapy, reflexology  
Swedish body massage, nail extensions, ear piercing,  
spray tans and much more.....

4 Talbot Square, Cleobury Mortimer  
01299270630

Gift vouchers also available – the perfect Christmas present

### Mick Fox

*Carpentry & Tiling Services*  
Doors, Flooring, Skirting,  
Cladding, Shelving.  
Ceramic Wall and Floor Tiling.  
No job too small  
Free estimate  
Tel: 01584 881434

**RH Electrical**  
Specialising in all aspects  
of Domestic electrics  
Professional service in  
design and installation  
Part P registered  
Richard Horder 07531 170352



# S. Turner Fencing

1 crown Barns,  
Hopton Wafers  
Cleobury  
Mortimer  
Worcs  
DY14 0NB

- Specialist in all types of fencing and gates supplied and erected
- Garden Structures and Timber Products including; Pergolas, log stores, seating, arches, car ports, e.t.c
- landscaping services including; slabbing, garden walls, and decking e.t.c.

call Steven Turner on :

Mobile 07753100136 or 01299 270965

## A.J. Bate (Builders)

Established over 30 years

All types of building works undertaken

Tel: 01299 271711

.Extensions and renovations for Period, Traditional and New Properties.

.Roofing

.Purpose made Timber Windows, Doors and Sash Windows

.Timber Conservatories and Summer houses

.Bespoke Kitchens

Contact :

Mick: 07956142051

E-mail Michael.Bate@btconnect.com



Professional Dog Grooming  
Jackie Beddoe

Tenbury Road, Clee Hill, Ludlow, SY8 3NE

Tel: 01584 890 532

Mobile: 07891 887 578

# Clarion Clippings - The Local News



**OVENCLEAN.**  
The original oven cleaning specialists

Put the sparkle back into your oven with a call to an experienced Ovensclean specialist!

- Ovens
- Agas
- Grills
- Hobs
- Extractors
- Microwaves
- BBQs



**OVENCLEAN.**  
The original oven cleaning specialists

For further information please call Andy Winton:  
**0800 840 7127 / 07557 110930**  
[www.ovenclean.com](http://www.ovenclean.com)



**LES HALL**  
◀Window cleaning service▶

**01746 861752**

—Established 1986—

## Electrician

Indoor/Outdoor Lighting Specialist  
Repairs and Installations

No Job Too Small, Reasonable Rates

For an Honest and Friendly Service Please Call Mathew

Part P Approved      Tel: 01584 711553  
Mob: 07974 638045



## DAN JONES PLUMBING

**Qualified and Experienced Plumber**

All types of jobs undertaken

**Specialist in complete Bathroom installations:  
expert Tiling and Flooring included.**

Highly competitive rates

Phone for a free Quotation: **01299 271 356** or **07815 786 690**

**Darren Forster HND**  
Computer Technician

PC Repair – Networking – Virus Removal  
01584 873 528 – [www.axiam-pc.co.uk](http://www.axiam-pc.co.uk)

10% OFF YOUR FIRST TREATMENT

**KIM WINCH**  
MASSAGE & BEAUTY  
MOBILE THERAPIST IN  
KIDDERMINSTER & LUDLOW AREAS  
07715823205  
[kimwinch@hotmail.co.uk](mailto:kimwinch@hotmail.co.uk)  
[www.kwmassageandbeauty.co.uk](http://www.kwmassageandbeauty.co.uk)



**Elite Sweeps**  
Professional Chimney Sweep

- Prompt, reliable & friendly service
- All types of flues & appliances cleaned.
- Cowls and Chimney Pots fitted.
- Fully qualified by the Guild of Master Sweeps and fully insured.
- Guild certificates issued after every sweep.
- Stove Installations/Chimney lining.



Call Eddie

Tel. 07895 612915 or 01299 871334

# Clarion Clippings - The Local News

## CLOWS TOP GARDENING CLUB

The proposed speaker for our August Meeting was unfortunately laid up with a bad back and could not make it. However Julia Scott from 'The Walled Garden' in Worcester came to the rescue and gave a delightful talk on the history of the garden and how it has developed over the years. The evening was a great success with everyone thoroughly enjoying the talk.

This year's Summer Garden Show had some very good entries, despite the wet summer, especially in the vegetable and flower classes. Clows Top Garden Club would like to say Thank You to all helpers and exhibitors. Without you there would be no show. A raffle on the day and a donation box raised £160 for the Air Ambulance.

Show Results were as follows:  
Vegetable, Fruit and Flower Cups won by R. Ingram, Barry

Symonds, Harry Jenkins, Val Greenhill, J. Griffiths and Austin Fletcher. Cookery Cup won by Aileen Hood.

Handicraft Cup won by Marion Cox and C. Lloyd. Floral Art Cup won by Marion Wilson.

Children's Shields won by Ben Williams and James Sivell.

If you need some fresh ideas or advice for your garden, then why not join us at one of our monthly meetings. Don't be afraid to come along.

A Diary Date:  
Wednesday October 24th. Dr Mike Jones, will give a talk entitled 'Mistletoe'

*Pauline Bowen*

## THE KINLET FAMILY PLAYGROUP

We had a lovely start to the new term in September and the children are happy to be back. We are currently settling back in and thinking about ourselves and who we are.

We've also taken advantage of our surroundings and picked

blackberries and apples to make a lovely crumble.

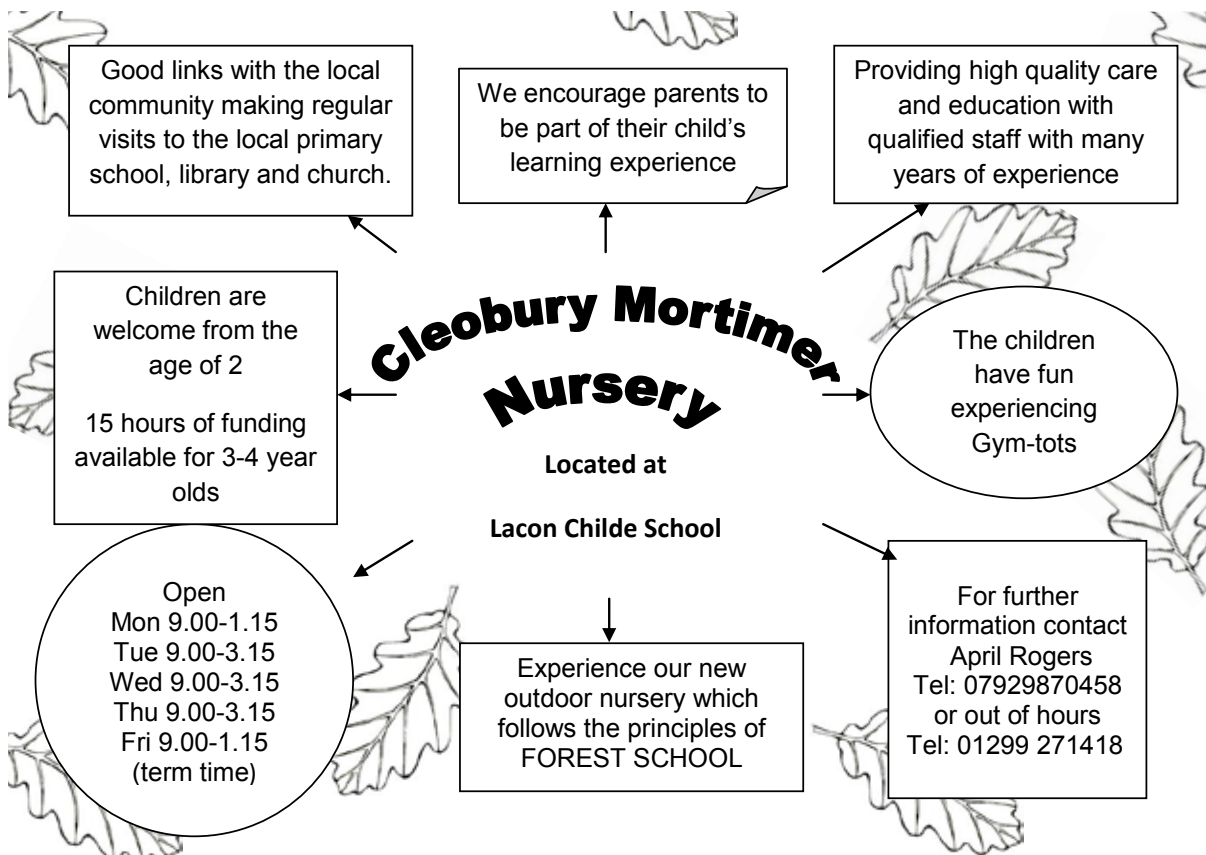
Unfortunately we've had to say goodbye to Miss Pearce this term. She has accepted a full time position at another nursery she worked at. We will miss her a lot but wish her all the best in her future.

Please remember that this term, the Playgroup will be open Mondays, Wednesdays and Thursdays, 9.00am to 3.15.

Our Toddler group 'Little Tiddlers' (where an adult and child/ren can stay and play) runs within the Thursday morning session from 9.30-11.30am, at a cost of £2.50 per child.

We have 15 hours of funding for every child the term after their 3rd birthday.

If you would like to come and see our friendly family Playgroup, recently re-awarded 'Good' by Ofsted, please call 07794 166514 or email [info@kinletfamilyplaygroup.co.uk](mailto:info@kinletfamilyplaygroup.co.uk)  
*Zoe Pearson*



## Another Page of Clarion Smalls. They Offer a Wide Variety of Services Here on Your Doorstep



### Domestic Appliance Repair

Repairs and Sale of:-

- washing machines
- Tumble dryers
- Dishwashers
- Cookers

No local call out charge 01299 270930

### HANDY MATT

FOR ALL THOSE JOBS THAT NEED DOING OR YOU NEVER GET DONE AROUND THE HOME OR GARDEN. ALL JOBS CONSIDERED... RATES TO MAKE YOU SMILE... CALL ME TODAY AND GET THEM DONE!  
GARDENING TO GUTTERING...  
PAINTING TO PATIOS...  
TREE SURGERY TO TILING...

TEL 07731 459631 OR 01299400420



### Alan Smith Aerials

*Your local installer is fully qualified and insured to fit Digital compatible TV aerials, Freesat(non-subscription satellite), FM and DAB radio aerials, Digital bypass amplifiers for multiroom systems, extensions, repairs, and new fits.*  
**01299 270007 - 07970 675728**

### T. CARTWRIGHT LTD

BUILDING, PLUMBING, HEATING AND ELECTRICAL CONTRACTOR

Specialist in Restoration and Renovation of Period Property

Oil Fired Central Heating Boiler Service, Repair & Installation of Systems

11 Lower Street,  
Cleobury Mortimer  
DY14 8AA

Tel/Fax: 01299 270725

Mobiles: 07831 896392, 07831 896394



### FALCO HEATING

The Solid Fuel Specialists

**GARY HARDING - HETAS registered**  
6 Severn Manor Gardens  
Stourport on Severn  
DY13 0LX

T: 01299 821069

M: 07896 685 947

FALCO HEATING@BTINTERNET.COM  
WWW.FALCOHEATING.COM

Delightful seaside cottage overlooking the beautiful Duddon Estuary. Haverigg is on the South West coast of Cumbria on the fringe of the Lake District.

*Lazey Cottage, Cumbria*



- 2 bedrooms + cot
- Children and pets welcome
- Immaculately presented with all facilities
- Prices fully inclusive. From £295 to £535 pw
- Short breaks and Winter lets may be available.
- For brochure, please ring:

Gloria: 01229 772515 or 07811555978

Pat: 01229 773291 or 07743704783

### Piano tutor

Welcoming learners of any age, whether or not you've played before  
Day times currently available and some after school/evening spaces

*I can come to your home*

Francis Engleheart

07710 288526 fengleheart@hotmail.com

### BREATHTAKING WEDDING FILMS

BESPOKE

CONTEMPORARY

UNOBTRUSIVE

Specialists in creating individually Tailored wedding films



"One word...AMAZING!!!! We love it!!!! We cried as soon as we put it on, it brought back so many happy memories, it caught every moment and we will never be able to say thank you enough!"  
Jo and Joel

Discreetly capturing Your perfect day as it unfolds

On Track Productions

Call now to reserve your date  
07528 512 620  
claire@ontrackproductions.co.uk  
www.ontrackproductions.co.uk

# The Clarion Weekly Social Calendar

Day	Time	Event	Contact	Phone	
Sun	08.30	Holy Communion, Parish Church		CM 270624	
	09.45	Parish Communion, Parish Church		CM 270624	
	09.00	Mass, St Elizabeth's, Lower Street	Canon Walsh	01584 872906	
	10.30	Cleobury Country Archers, Lacon Childe Sports Field	Lesley Burnside	CM 271374	
	10.30	New Life Church – for venue call	Derek Morris	CM 270787	
	11.00	Morning Service, Methodist Church	Rev H Roberts	01584 819649	
Mon	08.00	Kinlet Family Playgroup, Kinlet School Mon to Fri		07794 166514	
	08.00	Chorley Family Playgroup, Stottesdon School Mon to Fri	Zoe Day	01746 71879	
	09.00	Peter Rabbit Nursery, Lacon Childe School Mon to Fri	April Rogers	CM 271418	
	09.00	CM Playgroup, Primary School, Mon to Fri	Jane Preece	07816 193933	
	09.30	Morning Workout, Sports Hall	Deena	CM 271317	
	10.00	Age UK, Monday Club, St Mary's Place	Sarah Wilde		
	15.45	Gym Club with Ann Davis, Lacon Childe Mon & Wed	Don Carter	CM 270312	
	18.30	Karate Club, Lacon Childe School	John Nelson	CM 879210	
	19.00	Tai Chi Class, Lacon Childe School	Rose Jacks	01584 875544	
	19.30	Rangers Meeting, Old Pump House, Church Street	Helen Smith	CM 270912	
	19.45	Bingo, CM Sports & Social Club	Alan Evans	CM 270114	
	20.00	Women's Clog Dancing Classes	Linda Small	01746 718624	
	Tue	10.00	Nippers, Moths & Tots, Methodist Hall, Church Street	Emma	CM 272959
		14.00	Friendship Club, Parish Hall, Church Street	Janet Rolston	CM 270353
15.45		Ballet Class, Lacon Childe School	Liz Broadway	CM 251246	
17.00		Sports Roundabout, Sports Hall, Love Lane		CM 271317	
17.30		Beavers Meeting, Old Pump House, Church Street	Becky Keeley	CM 271416	
18.45		Bridge Club Hopton Wafers Village Hall	Wendy Duley	CM 270562	
19.00		Bell Ringers' practice night, St Mary's Church	Liz Walker	CM 271808	
19.30		Modern Dance Sequence Club, Lacon Childe School	E Wrigglesworth	01562 822291	
Wed		10.30	Over 50s Relaxing Exercises, Doddington Village Hall	Freda Childe	01584 891180
		16.45	Gym Club for 6 & over, Lacon Childe School	Don Carter	CM 270312
	17.15	Brownies Meeting, Old Pump House, Church Street	Emma Reynolds	CM 272746	
	19.00	Guides Meeting, Old Pump House, Church Street			
	19.00	Yoga Class with Anna, Lacon Childe School	Don Carter	CM 270312	
	19.00	Zumba Class with Emma Forni, Lacon Childe School	Emma Forni	01746 862842	
	19.30	CM Concert Brass Band practice, Parish Hall	Stella Wilcox	CM 270560	
	19.30	New Life Church prayer meeting. For venue call	Derek Morris	CM 270787	
	19.30	Choir Practice, Parish Church	Philip Engleheart	CM 270627	
	Thu	09.30	Little Tiddlers, Kinlet Family Playgroup, Kinlet School	Zoe Pearson	07794 166514
11.00		Sale of second hand goods, Knowle Sports Club, Clee Hill	Audrey Taylor	01584 890644	
14.00		Scrabble Club, St Mary's Place, Non residents £1.00	Jo Booton	07969 104808	
15.30		Cleobury Comets Netball, CM Sports Centre term time	Mandy Smith	CM 271809	
17.30		Brownies Meeting, Old Pump House, Church Street	Rebecca Barnes	CM 272945	
19.00		Bell Inn Band improvers rehearsal, Bell Inn, Lower Street			
19.15		Cubs Meeting, Old Pump House, Church Street	Kate Pearce	07772 102986	
19.30		Tums and Bums, Lacon Childe School	Don Carter	CM 270312	
19.30		Adult 7-a-side Football League, CM Sports Centre	Dave Hinves	CM 271317	
20.00		Bell Inn Band rehearsal, Bell Inn, Lower Street			
20.00		11-16s Badminton Club, CM Sports Centre		CM 271317	
21.00		Over 16s Badminton Club, CM Sports Centre		CM 271317	
Fri	10.00	Tiny Stots, Chorley Playgroup, Stottesdon School	Zoe Day	01746 717769	
	10.00	Tiny Tots, Parish Hall	Bettina Poole	CM 271868	
	17.30	Rainbows Meeting, girls 5-7 years, Old Pump House	Jean Basham	07792 813774	
	19.00	Scout Meeting, Old Pump House, Church Street	Chris Andrews	CM 270937	
	20.00	Badminton, CM Sports Centre		01584 881359	
Sat	08.30	Sale of second hand goods, Knowle Sports Club, Clee Hill	Audrey Taylor	01584 890644	
	10.30	Junior Coaching, CM Golf Club, Wyre Common	Robert Watkins	CM 271112	

# Posh Potties

Luxury Designer Toilet Hire

Are you having a garden party or BBQ this summer? If so have you considered hiring one of our new Comfort XL portable toilets? Very reasonable weekend rates with free delivery.

We can also provide Luxury Designer Toilet Trailers to larger events.

Please visit our website or contact us on 01746 718518 / 07929 314020 for more information.

[www.poshpotties.co.uk](http://www.poshpotties.co.uk)

[emma@poshpotties.co.uk](mailto:emma@poshpotties.co.uk)



## Birthday Parties

£15.00per person for half day activities  
(min. 10 people)

(choose two activities from the list below or enquire about other possibilities)

<b>Climbing/Abseiling</b>	<b>Big Bounce</b>	<b>Indoor caving</b>
<b>High ropes</b>	<b>Raft Building</b>	<b>Archery</b>

Please contact us and we will work out a price based on your requirements.

Call: Tracy Monk or Steve Widdowson on  
**01299 271217**

Or email [enquiries@pioneercentre.org.uk](mailto:enquiries@pioneercentre.org.uk)  
Also available Day Bookings & Residential Trips



## Luxury for your cat, peace of mind for you

- Vaccinated cats only
- “cuddle time” spent with every cat, every day
- Individual likes & dislikes catered for
- Inspection invited
- The cattery of “First Choice”
- Tranquil environment
- Family units for cats from the same home
- Protected by security system
- Full height sneeze barriers
- Spacious, heated chalets
- Bright & airy
- Completely protected from the weather
- Spotlessly clean

Catsley View, Meaton Lane, Kinlet, DY12 3DD, call 01299 841 270

## BEWDLEY LOCKSMITH 24/7

Reliable & Trusted

Time served locksmith  
quality products used only

Cctv installation

Security upgrades

Safes opened and supplied

Security doors installed

Emergency boarding service

01299 400364 - 07508 919 748- 24/7

[www.bewdleysecurity.co.uk](http://www.bewdleysecurity.co.uk)

## Special Feature - Personality Portrait

Hannah Carrier has ambitions to become a writer. On work experience with our printer Linda Fowler, The Clarion asked her to write about a local character. She found two, a couple who are certainly ....

### IN HARMONY

Introducing Stephen Holland and his wife Marie. Both active members of Far Forest Church and an inspiring couple whose lives have touched many in the Wyre Forest district with their charitable works.

Stephen spent 30 years as a policeman, joining the Shropshire Constabulary in October 1965 and working in Shropshire, Worcester and Hereford. He went on to serve as a community officer and became the schools' liaison officer for Kidderminster.



*He most enjoyed involvement with the public, especially within schools where he taught valuable lessons such as 'stranger danger.'*

During this time, Stephen was singing at charitable concerts to help raise money for a variety of causes. In one year he performed at 19 Christmas concerts in addition to his policeman work-earning the title 'The Singing Policeman'.

More recently, Stephen was the Recreational Warden of Wyre Forest for five years, welcoming and answering visitors, assisting

those who got lost and offering help and advice, before retiring.

He is still very much a part of the local community and many of you will know him as the Church Warden of Far Forest Church, responsible for keeping the fabric of the church together and occasionally delivering services.

Marie Holland worked in special education for 20 years, 13 of those at Kidderminster's Blakebrook School for children with severe learning disabilities. As the sports teacher, Marie contributed in many different ways: she organised sporting holidays for the students, taking them to Llanrug and Upton Warren where they were given the opportunity to experience exciting sports such as canoeing, abseiling, rock-climbing and quad biking.

A member of the Coventry Association for Special Needs, Marie managed sporting activities for children in the West Midlands district. They comprised track and field events held at Alexander Stadium, where Blakebrook School won a total of 19 gold, silver and bronze medals.



*Marie was appreciated so much that when she and Steve were married in 1990, the staff of Blakebrook organised their wedding reception and the students got to be a part of it too.*

Blakebrook also competed internationally and still continues to do so. Marie took some of the children to Heidelberg to take part in a special olympics event. She says that the most enjoyable and pleasurable part of her job was awarding the children their medals and seeing her students' achievements.

Now retired, Marie is still a trustee of the Odell Centre which provides education and activities for locals aged 19 years and older and continues to sing, alongside her husband, in Bridgnorth Choral Society. The couple's dedication does not end there; they still contribute to the community: from church events to the Jubilee street party they put together for their neighbourhood this year. They are a credit to Far Forest and the commitment and passion shown in their lives should provide inspiration for the rest of us.

*Hannah Carrier*

### AND SOME NEWS.....

#### HEALTH AND BEAUTY

##### OPEN NIGHT

Kim Stanley's Health and Beauty on Cleobury's High Street is having an open evening later this month, on Monday the 22nd. The salon will be open from 6.00 to 8.00 in the pm and make-up demonstrations will be joined by the New Jessica Nailsy.

Come along and see what it's all about. Everyone is welcome and there will be drink and nibbles available.

Quite apart from the demonstrations and the new product launch, it will be a chance to see what a welcoming place the salon is. It's one of the newer generation of businesses on the main street, with a 21st century approach to making the customers comfortable and welcome.

## Stewart Mumford Architectural Services Bespoke Architecture

Great value personal service backed up with extensive local knowledge, established links with other construction professionals to ensure comprehensive packages specifically tailored to individual needs.

Initial consultation free of charge.

Specialist in Works to Listed Buildings, Affordable Houses, Open Market Houses, House Extension and Alteration, Barn Conversion and Commercial Projects.



T: 01299 271068  
M: 07977 921039  
E: office@stewartmumford.co.uk

### AL Pass Driving School

A professional and friendly independent driving school based in Cleobury Mortimer offering a high standard of driving tuition.

Lessons start from £10 per hour, saving you up to £55 on the first 5 lessons.

Call 0789 67 41041 to book up your lessons.

[www.alpassdrivingschool.com](http://www.alpassdrivingschool.com)

## THE ROAD TO SUCCESS...

...with **AL Pass**



“The days that make us happy make us wise.”

*John Masefield*

Preparatory school for children aged 3 to 13  
Kinlet Hall • DY12 3AY

Tel: 01299 841230

[www.moffats.co.uk](http://www.moffats.co.uk)

On the B4363, 5 minutes from  
Cleobury Mortimer



# Moffats



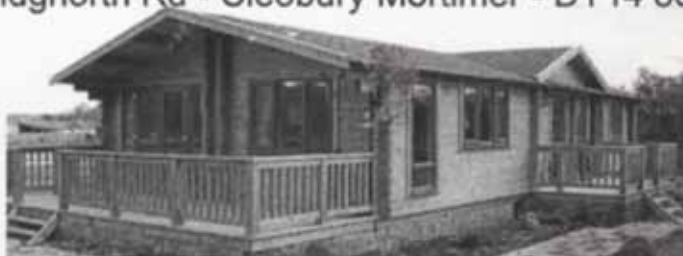
## T. PREECE TIMBER BUILDINGS LTD

The Old Station Business Park - Bridgnorth Rd - Cleobury Mortimer - DY14 8SY

Custom Built

Log Cabin & Timber Framed  
Mobile & Permanent Homes

Garden Sheds and Summer Houses



01299 272801 - 07970078336 - [www.tptimberbuildings.co.uk](http://www.tptimberbuildings.co.uk)



## October in the Wyre Forest - Linda Iles writes



*The hedgehog, equipped to cope with winter, so long as he has a decent food supply.*

We may feel rather short-changed in terms of our summer this year, but that won't stop the onset of autumn. Since the autumn equinox on 22<sup>nd</sup> September the days have been shorter than the nights. The declining daylight hours send a natural signal to every living thing to get ready for harder times, triggering behaviours designed to give the best possible chance of survival.

Hedgehogs, bats, dormice, ants and snakes are some of the creatures that have the strategy of hibernating for the winter months. Cold-blooded animals are not able to regulate their internal temperature and so have no choice but to shut down when the weather is cold. The mammals (hedgehogs, bats and dormice included) can keep going but only as long as there is enough food around. Hedgehogs eat as much as they can in the autumn (slugs for main course, blackberries for dessert) to build up reserves of fat then find a dry spot, perhaps under a pile of brushwood and dead leaves, to snooze away the coldest days, waking in warm spells when

they must find more food if they are to replace the energy used by their waking activity. It is better for the hedgehogs, if not for us, for the winter to be relentlessly cold so that they stay dormant until the spring. A small hedgehog found awake in November may need your intervention to survive, thus breaking the general rule that wild animals fare best left well alone. They are so scarce these days that I feel we need every individual.

It was over 10 years ago that the Discovery Centre started a group for pre-school children and their carers. Forest Friends have been meeting on Thursdays in term-time from 10am to 11am for forest-based play and activities, led by Discovery Centre staff and recently by volunteers as well. This autumn the Ranger-led activities will take place on the first Thursday of each month, and this month the theme for the games and crafts is "Hibernation". The one hour session costs £3 per child with £1 for each participating sibling (ie same family). On the other Thursday mornings of each month, Forest Friends are welcome to meet informally at the same time to walk the Discovery Centre Sensory Trail and can use a box of activities supplied by the learning team at a charge of £1 per child.

Sunday 14<sup>th</sup> October - See what the season has brought on two Fungus Forays: 10.30am to 12.30pm from Hawkbatch car park, 2.00pm to 4.00 from Earnwood car park. (Both of these car parks are on the B4194) Cost £7.00. Booking essential.

Then there are Health Walks every Tuesday and Sunday starting from the Forest Cafe at 11am to build fitness at a gentle pace. For more information on any of these or to make a booking please ring 01299 266929.

The Wyre Forest is the subject of a new booklet of that name, just published by the Forestry Commission. It is full of wonderful photographs and information on the geology, history, wildlife and management of this wonderful natural gem on our doorsteps. It will make a good introduction to new visitors but is also designed to appeal to those of us who have known and loved it for many years. You can obtain a copy at Bewdley Tourist Information Office (at the Museum), The Forest Café, Hopley's and other local outlets at £6.00 a copy.

Linda Iles

### BELATED

#### CONGRATULATIONS

To Michael and Dorothy Davis: Congratulations on your Golden Wedding Anniversary on September 1st.

Love from The Pound a Week Girls.

#### LATE NOTICE OF FREE BLOOD TESTS

Too late to include in the Social Calendar, is free PSA blood testing at the Corn Exchange in Kidderminster on October 15th, starting at 6.00pm

This is the standard test for early detection of cancer in the prostate. If you catch it early, it's the most curable form of cancer in men over 50. So don't shrug and say it will never happen to you; it can. Action now could avoid a great deal of pain later.

**Tiny Stots**  
Informal parent  
and toddler group  
Fridays (term time)  
10am-noon

# Chorley Family Playgroup

Located  
next to  
Stottesdon  
School



...shaping the future

Highly-qualified staff providing Early Years Foundation Stage learning in a happy, safe and stimulating playgroup with a beautiful garden and outdoor play area.

Ofsted  
'GOOD'  
report



Open  
Mon-Fri  
8am-5.30pm  
(term time)  
Competitive fees  
Vouchers accepted  
Holiday care available

Extra-curricular  
activities including  
yoga, dance,  
craft projects, trips and  
gardening to support  
your child's learning  
through play.

Community orientated  
with strong links to  
local schools.  
15 hours per week  
of funding available  
for children over 3.

01746 718769 [www.chorleyfamilyplaygroup.co.uk](http://www.chorleyfamilyplaygroup.co.uk)

Ofsted Reg. No. EY369688  
Charity No. 1018755

Kim Stanley

## HEALTH & BEAUTY

01299 271800

Spraytan Non-Surgical Facelift Electrolysis Aromatherapy Waxing Reflexology  
Geleration Gel Polish Facials Jessica Nail Care Hot Stone Therapy Hopi Ear Candling

**Enquire instore for full range of treatments available.**

*Kim Stanley*

IHBC - BABTAC

30. High St. Cleobury Mortimer

### Reiki

**Feeling Anxious, Stressed or Low ?  
Reiki Soothes, Relaxes and Comforts.**

**Tel. 01584 890284**

**[www.katejones-reiki.co.uk](http://www.katejones-reiki.co.uk)**

30 High St *Kate Jones*

\* Over 20 years experience in Reiki (Reiki Master)

### Physiotherapy Acupuncture

**Senior band 7 Chartered  
Physiotherapist**

**Tel. 07905 766729**

30 High St *Jill Sharp*

SRP, MCSP, BSc(Hons), AACP

## NJ Plumbing & Heating

All aspects of domestic plumbing:  
bathrooms-kitchens-showers-central heating

Oil boiler servicing



Registered  
Business

Phone 01299 270175

Mobile:07967 659624



### Cleobury Mortimer Playgroup

*".....all friends together"*

Now proud to be based at Cleobury Mortimer  
Primary School.

Friendly and caring staff with flexible sessions  
times *(term times only)*

For all enquiries  
please

Phone

Jane or Rachel

on;

07816 193933

Registered Charity no: 1037191

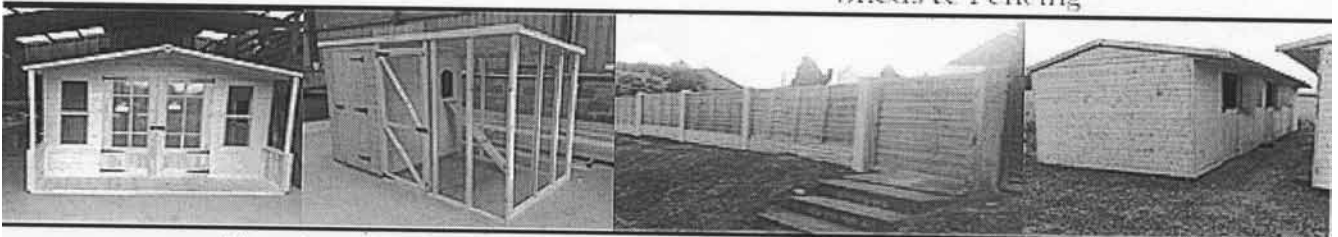
Ofsted "GOOD" inspection report

Government 15 hours funding available for 3-4  
year olds.

*Places available from  
September 2012 for children  
aged 2-4 years.*

## Hollywoods

Sheds & Fencing



Handmade quality Sheds, Fencing & Garden accessories  
Hollywaste Workshop, Cleobury Mortimer, DY14 0HB

Office: 01299 271 777

Wayne: 07875 217 975

Stewart: 07577 864 350

E-Mail: [hollywoodssheds@tiscali.co.uk](mailto:hollywoodssheds@tiscali.co.uk)

# Cross House Arts Picture Framing Gallery, Mamble

Opposite The Sun & Slipper Inn



Choose your own bespoke frames  
Expert advice available  
Art Materials and Greetings Cards for sale  
Exhibition of local artists paintings & prints

## Opening Times

Wed. to Sat.  
1:00pm - 4:00pm

## Other times:

Ring George on  
01299 832616

# EUREKA

FINANCIAL SOLUTIONS

Mortgages ✓ Life Assurance ✓ Protection ✓  
Investments ✓ Pensions ✓ General Insurance ✓  
Will Writing ✓ and much more...

Sometimes your finances can be complex. At Eureka Financial Solutions we can give you the expert guidance you need, right from the start of your journey.

**James Payton** – Protection Advisor

Office: 01299 821160 Mobile: 07974 118463

Email: [james@eurekafinancialsolutions.co.uk](mailto:james@eurekafinancialsolutions.co.uk)

Web: [www.eurekafs.co.uk](http://www.eurekafs.co.uk)

**Financial Advice you can rely on – can you afford to wait?**

Eureka Financial Solutions is an appointed representative of Openwork Limited which is authorised and regulated by the Financial Services Authority. Will Writing is not regulated by the Financial Services Authority.



# WYRE FOREST WINDOWS

UPVC DOUBLE GLAZING INSTALLERS & PROPERTY MAINTENANCE

**“Over 15 years in the business, working to the highest standards Your home is in safe hands”**



Call today for a free no obligation quote

**07977609262**

Email: [wyreforestwindows@hotmail.co.uk](mailto:wyreforestwindows@hotmail.co.uk)

A rated as standard  
Fully insured  
15 year manufacturer warranty  
Chamber of trade member  
High security doors and windows



[www.wyreforestwindows.co.uk](http://www.wyreforestwindows.co.uk)



We control:

Insects Rodents  
Mammals Birds  
Electronic fly killers  
supplied & fitted

Mobile: 07890 048 362

**WYRE FOREST  
PEST  
CONTROL  
AND  
WILDLIFE  
MANAGEMENT**



All work guaranteed  
No call out charge  
Discount for O.A.P's  
Free survey and quotation

Office: 01562 747 210

[www.wyreforestpestcontrol.co.uk](http://www.wyreforestpestcontrol.co.uk)

# **Cleobury Patients' Voice**

## **A combined report from both the Patients' Voice and Cleobury Compassionate Communities**

### **An Opportunity to Join CPV, Cleobury Co Co or the Medical Centre On-line Forum**

Cleobury Patients' Voice are having a stall at The Flu Vaccination Clinic, Saturday October 6th at Lacon Childe School, 10.00am – 3.00pm.

Are you considering joining CPV, applying to be a volunteer for Cleobury Compassionate Communities and/or joining the new Medical Centre Online Forum? If so, please come and talk to us and take this opportunity to learn more about any of these groups. Also, you can go to Cleobury Mortimer Medical Centre Website: <http://www.cleoburymortimermc.co.uk/>

### **COFFEE MORNING for Cleobury Carers Group and CPV**

CPV is organising a coffee morning on Saturday October 20th, 10.00am to 12.00noon, in the Market Hall, Cleobury Mortimer

As well as refreshments with lots of chat, there will be a Tombola, Book and Cake Stall. The proceeds will be shared between Cleobury Carers Group and Cleobury Patients' Voice.

The Cleobury Carers Group is a much needed, new initiative for Cleobury and it requires our support to establish itself in our community. Please help by attending this event.

### **Next Group Meeting**

The next meeting of Cleobury Patients' Voice will take place on Monday October 15th at 7.00pm, in the Market Hall.

### **Contact CPV with Concerns, Comments and Suggestions on the Health and Social Care Service in Cleobury**

We investigate all comments and the like sent to us. If you want feedback and you use a comments card in the Medical Centre, please put your name and address on the card. All contacts are treated confidentially, but if we have more details we will be able to get better outcomes for requests & concerns. You can contact us direct by calling either: Jenny: 01299 271383, Jacqui: 01299 270019 or Sarah: 07729480201 or email: [cleoburypatientsvoice@hotmail.co.uk](mailto:cleoburypatientsvoice@hotmail.co.uk).

### **Monthly Update for Cleobury Compassionate Communities (Cleobury Co Co)**

#### **Co Co Coordinator and Office**

We have now appointed a part time Coordinator for Cleobury Compassionate Communities. As soon as they take up post in early October, we will be opening a new office in Market Hall. The office will be open to members of the public, Monday to Friday between 10.00am and 12noon. It will also be used for volunteer training purposes.

#### **Next Volunteer Training Programme: Places Available**

There are still places on the volunteers training programme to be held on October 9<sup>th</sup> and 10<sup>th</sup>. We urgently need more volunteers and therefore would like to fill this programme. If you are interested please contact Jenny McCrorie on 01299 271383.

**Knowing that many readers have busy lives that can't  
be ruled by the simple matter of picking up your  
Clarion, we've put it out on the internet.  
Just type in [www.cleoburyclarion.co.uk](http://www.cleoburyclarion.co.uk)**

When you need a helping hand Call...



### Golden Hands Domestic Cleaning Service

- **Domestic Cleaning**—for all your household chores
    - **Ironing Service**
    - **Moving House**—clean the old/new
    - **New Builds**—clean the builders dust away
  - **Holiday Properties**—handle all the changeovers
  - **Spring Cleans**— complete blitz from top to bottom
  - **Aftercare**—after being ill and need some extra help
- Fully Insured—references available  
For friendly professional advice and quotes

Call Sally Hamilton-French on  
01746 714114 or 07875 555940.  
Email: [wildliketracking@easynet.co.uk](mailto:wildliketracking@easynet.co.uk)

### You Name It - We Store It



#### • SELF STORAGE •

- Safe • Secure •
- Clean • Dry •
- Rentals from one week •
- Furniture • Archives •
- Trade Stock •
- Vintage Cars • etc...

#### Muckley Farm Storage

Bush House, Muckley Farm, Acton Round, Bridgnorth, Shropshire WV16 4RW.  
Office: 01746 714114 • Mobile: 07860 832349  
E-mail: [admin@muckleyfarmstorage.co.uk](mailto:admin@muckleyfarmstorage.co.uk)  
[www.muckleyfarmstorage.co.uk](http://www.muckleyfarmstorage.co.uk)

## CLEOBURY MORTIMER SPORTS & SOCIAL CLUB

Proudly Presents Sensational Female Duo

# Passionate Kisses

Featuring

## Rita B & Annie Humphrey

### Saturday 20<sup>th</sup> October

DOORS OPEN AT 7.30PM

Members & Guests Welcome



Tickets available from the club bar  
Members £7.50 Non-Members £9.00

GET TICKETS EARLY TO AVOID DISSAPPOINTMENT FOR THIS POPULAR SHOW !!



Find us on Facebook

Further info contact (01299) 271448



### Cleobury Dental Practice

For all your NHS and Private Dental Treatment

We have expanded our team with our own in-house **CLINICAL DENTAL TECHNICIAN**.

Come and discuss with him the latest options available using new designs and techniques to create truly life-like natural looking dentures on the premises at realistic prices.

If you would like to come and meet our new technician please phone **01299 271747**.

We now also offer an out of hours repair service.

**07973957118.**

## Clarion Clippings - The Local News

### VANDALISM AT GREENS BARN ALLOTMENTS

**Flo Hadley has some very sad news:**

Members of Cleobury Mortimer Horticultural Society are normally quiet, unassuming and friendly people who are never happier than just getting on with digging, weeding, planting and enjoying the fruits of their labours. Until now. We are furious!

In the past three weeks or so, the plots on the allotments have been vandalised on three separate occasions. Destruction of fruit cages, storage boxes and other items amounting to around £1000; damage to crops; a metered water tap, encased in metal, prised open (twice!) and left to run overnight; and now a bench set on fire on top of compost bins.

It's easy to blame children and young people, especially since there has been damage once before, but all of this feels and appears to be quite different. For example: specific plots have been damaged more than others and targeted more than once; the culprits must know that the water is metered and that leaving it to run will cost us dearly; and there is little or no evidence of trampling on the open ground by people running around.

The allotment holders are representative of the community. The young and old, the fit and those for whom gardening helps them get fitter, and the Cleobury born and bred as well as newcomers. So why is this happening and what sort of mindless people could be responsible? It's quite a jaunt to even get there, so the perpetrator (s) must set out with a mission to

target these communal facilities. The police have been informed and we are working with them to identify those responsible. If you have any information, please call in at the police station to report it or email [anthony.sewell@westmercia.pnn.police.uk](mailto:anthony.sewell@westmercia.pnn.police.uk).

### THANK YOU!

**As ever the Classic Bike Show in September was raising funds for Lacon Childe School. And once again the profit will be over £5,000. So the school's Parent Teacher Association acknowledge the help from our community of traders and thank them for their generosity. They are:**

Ashley's Bakery, Carrot Tops, Hems Butchers, Katerfresh, Mawley Milk, Saddler's Barn Eggs, Flowers by Fiona, Red Hare, Mr Ben's Barbers, Spire Hairdressers, Londis, Lower Street Garage, Galaxy Chinese Takeaway, The Sweet Shop, Bowkett's, Kim Stanley, Cleobury Pharmacy, Spice Empire, Spar Grocery Stores, Talbot Store, Gallagher's, Murley's of Stourport.

These good people either gave items for the tombola or supplied produce at a reduced price or even free of charge.

### PHILIP DUNNE MP SURGERIES

Mr Dunne has two near-local surgeries booked in October:

Friday the 12th: 4.30 to 6.00pm at the Community Centre in Craven Arms.

Friday the 26th: 4.30 to 6.00 at the Westgate Offices in Bridgnorth.

To make an appointment, please contact Jane Gibson in the Ludlow constituency office on 01584 872187.

### THE PARISH PLAN

To develop the Cleobury Mortimer Parish Plan a Steering Group was set up last year, consisting of members of our community and some of our Parish Councillors.

In order to gain your views, the steering group has developed a questionnaire. One questionnaire is being posted to every household in the Parish of Cleobury Mortimer.

You can obtain further copies from the Library and the Market Hall. It is also available for completion online at:

[http://www.shropshire-ccc.org.uk/supporting\\_local\\_people/community\\_development](http://www.shropshire-ccc.org.uk/supporting_local_people/community_development)

To have your say on future plans for Cleobury Mortimer, you must complete a questionnaire.

### THE bread2bake EXPERIENCE

Robert Swift of the famous baking family upon Clee Hill is offering the chance to try your hand(s) at bread baking. It's called the 'bread2bake experience' and you can do a half day, a full day or even two days, with meals included and overnight accommodation if you need it. Swift's own master bakers will guide you through the course.

More information on 01584 874767 or [www.bread2bake.co.uk](http://www.bread2bake.co.uk) Alternatively, if you want to try Swift's bread as they bake it, you can choose between their shop in Clee Hill Village or The Crusty Cob in Church Street.

### SILLY BITS

"[www.conjunctivitis.com](http://www.conjunctivitis.com) - that's a site for sore eyes."

"I just got a new blindfold. Can't see my self wearing it, though."

"My sister works for the Gas Board. Wanna meter?"



We are a family business based in South Shropshire and with 25 years of experience in the electrical contracting industry this means that for those looking into generating their own solar electricity using Solar PV technology, we are professionally well placed to be your Solar PV installers.

First and foremost we are a professional installations company that's not driven by a sales team. Our highly trained and experience staff are led by Andy Wakeman whose hands on project management ensures customers receive the personal attention they deserve at all times. Our loyal and varied customer base is proof that our customers have always relied on our obligation free quotes with no hard sell and fully guaranteed work.

As one of a handful of independent businesses in the area that is both an NICEIC Fully Approved Contractor and an MCS Accredited Installer, we can offer a complete in house service for every type of electrical

and renewable energy installation. This means that regardless of the size of work there is minimum inconvenience and guaranteed high standards every time.



*Our unique roof integrated Solar PV system was recognised in the 2011 Cleobury Country Environmental Champions Day Awards. This installation is a local example of how renewable technology can be both visually compatible and beneficial to its countryside surroundings.*

**T: 07971 096267 / 08450 564173**  
**W: [www.awe-services.co.uk](http://www.awe-services.co.uk)**  
 Two Staks, Eagle Lane, Cleobury Mortimer, Worcs. DY14 8RA



# IN BUSINESS: Fairway Accountants and Business Advisers



*The partners behind Fairway:  
Simon Connolly seated; Simon  
Hector standing.*

**Fairway is a new local accountancy partnership with a fresh approach to the traditional service of accounting and business advice.**

Simon Connolly moved into Cleobury some 12 years ago not having seen his old school mate for over 20 years, both of them having attended Heathfield School at Wolverley in the 70's. Simon Connolly trained with chartered accountants in Birmingham, then spent 10 years as a partner in practice in Stourport on Severn; he then formed Fairway Management back in 1994. With steady growth each year over the past 17 years, a partner was considered

essential to keep the practice moving forward.

Simon Hector had spent 12 years in practice with two firms of chartered accountants before becoming a company Accountant and Finance Director for a large Shropshire based business.

Simon Hector's yen to develop a business of his own fitted neatly with Simon Connolly's need for a partner to share the workload and help to expand Fairway. They had common ambitions and both brought a range of experience to the partnership at its launch in mid 2011.

Growth in the first 12 months has far exceeded expectations. They now have a team of five, including a new apprentice starting the AAT course and a senior AAT qualified staff member starting ACCA training this year.

As well as offering the standard accountancy services for all small & medium size businesses, specialist areas include pubs, bars and restaurants, the construction industry & travel agent homeworkers UK wide.

They pride themselves on being friendly, approachable and available at any time to

suit their clients; seven days a week including evenings if necessary. Initial consultations are always free. Fixed fees, monthly payment plans are always agreed 'up front'.

So what does a local business think of the new services?

Martin Wheldon, landlord at the Talbot Hotel, has found the Fairway package invaluable: 'Really helpful, couldn't do the job without it,' was his response. 'They look after all the paperwork, Payroll, VAT and provide us with Profit & Loss Accounts every month. We can just get on with running the pub.'

Both Simons are local. Simon Connolly's mother is from Cleobury and her uncle owned C.S. Corbett & Son, a hardware store in town from the 1940's through to the 70s, while Simon Hector's family have farmed in Kinlet for many years.

These are local men, with local knowledge and in touch with local needs because they listen.

Both Simons are fully qualified, not to mention experienced, and are members of the Institute of Financial Accountants.

## **fairway**

### **Accountants & Business Advisers**

Proactive professional team available 7 days a week. Highly competitive fees.

Contact: Simon Hector 07896 439594 or Simon Connolly 07973 360456

Offices in Cleobury Mortimer & Stourport on Severn

Main Tel: 01299 822283 Email: [team@fairway-net.co.uk](mailto:team@fairway-net.co.uk)

[www.fairway-net.co.uk](http://www.fairway-net.co.uk)

**Clarion Smalls - The Best of Local Skills, Knowledge and Value. Private Businesses Giving Great Service.**

**BOUNCY CASTLES**

**SLIDES**

**GLADIATORS**

*Bungee Run*

**SUMO WRESTLING**

*Fun for all ages!*

**Martin Prosser**  
t 01299 401 971  
m 07956 058 828

NEW! for human hamsters

**GIANT Zorb Balls**

**Dawn Chorus Leisure**

[www.dawnchorusleisure.co.uk](http://www.dawnchorusleisure.co.uk)

Health Professional  
Registered Chiropodist



**Janet Manley**  
MSSCh., MBChA  
BSYA(reflex) Reiki Master

Specialist in Reflexology & Reiki Healing

Cleobury Mortimer based 01299 270193  
Home visits 15 mile radius 07805 268439



**Natalie's**  
mobile hairdressing service

cuts • highlights • colour  
perms • correction  
wedding day • hair up  
loyalty scheme available

styling for  
gals  
guys  
kids

07967 970 855

Nat's cut a few - this one's for you!

**Crumpsbrook Dog Training**

Training Classes for Puppies & Adults

Private one to one lessons

Enquiries: Jo Bargman 01299 270514

[www.crumpsbrook.co.uk](http://www.crumpsbrook.co.uk)

Affiliate of The British Institute  
Of Professional Dog Trainers



**CARTERS AUCTIONEERS**

REGULAR AUCTIONS OF ANTIQUES AND  
COLLECTABLES AT BLAKEDOWN PARISH  
ROOMS, NEAR KIDDERMINSTER.

VALUATIONS FOR PROBATE & INSURANCE  
HOUSE CLEARANCES

CONTACT: JOHN CARTER

11 CHURCH STREET

CLEOBURY MORTIMER

TEL: 01299 271130 / 07779 311 792

[www.cartersauction.co.uk](http://www.cartersauction.co.uk)

# **The Cleobury Clarion Local Information Page**

**October 2012 - Volume Eight - Edition Seven**

**Editor and Advertising Sales:** Jim Reynolds, 4 Childe Road, Cleobury Mortimer, Shropshire DY14 8PA. Telephone: 01299 270642 E-Mail: editor@cleoburyclarion.co.uk

Printed by: Linda Fowler at Glint Print 01299 266657

**The Clarion On The Web:**[www.cleoburyclarion.co.uk](http://www.cleoburyclarion.co.uk)

## **Where can I get it?**

**Collect the Clarion in Cleobury Mortimer from:** Lower Street Garage, Spar Grocery, Baldwin's Bookshop, The Post Office, Cleobury News, McCartneys Estate Agents, Farlow Estates, Harry Tuffin's, The Library and Talbot Stores.

**Or Out in Cleobury Country at:** Heath Farm Meats, **Bagginswood**, Clee Hill Post Office, Cleobury North Village Store, Clows Top Post Office, The Sun and Slipper at Mamble, Hopton Bank Service Station, Mawley Oak Garage, The Fighting Cocks at Stottesdon, The Duck Inn at Chorley, The Live and Let Live at Neen Sollars, The Eagle and Serpent at Kinlet, Parker Motors at Ditton Priors and McCartneys Estate Agents in Tenbury Wells.

Missed your Clarion? Cleobury Mortimer Library keeps the current month's copy on file.

## **THE DEADLINE FOR EDITORIAL CONTRIBUTIONS IN THE NOVEMBER ISSUE IS OCTOBER 23rd**

**The Cleobury Clarion is a member of the Cleobury Mortimer Chamber of Trade**

### **Clarion Contacts - Useful Local Telephone Numbers**

**CEMETERY ADMINISTRATOR** - 077 039 65064 Mrs Theresa Parfitt.

**CLEOBURY COUNTRY CENTRE** - 01299 272300 In Love Lane.. Open 09.00 to 5.00, Mon to Fri.

**CHAMBER OF TRADE** - 01299 270279. Mrs Lesley Burnside is the Chair.

**CITIZENS ADVICE** - 08444 991100. Or through the Wednesday link at the Cleobury Centre.

**CLEOBURY MORTIMER POLICE STATION** - 0300 333 3000. The Station is not manned full time; you can contact PC Tony Sewell direct at: anthony.sewell@westmercia.pnn.police.uk

**CLEOBURY MORTIMER SCOUTS AND GUIDES** - 01299 270215. Robin Borns is the contact.

**CRIMESTOPPERS** - 0800 555 111. Free Police contact. You can talk in confidence, to report any crime. You do not have to give your name.

**DOMESTIC VIOLENCE HELPLINE** - Women's Aid, 24 Hour support: 0800 783 1359

**HOME FROM HOSPITAL** - 01584 878046. For help over the first few weeks back home.

**JOB VACANCIES** - 01299 272300..See the local list in Cleobury Country Centre.

**MARKET HALL**- Dorothy on CM270324, 07761 976650 mobile or mcbrideneenpc@aol.com

**MEDICAL CENTRE** - 01299 270209. At weekends, the Shrop Doc Service.

**THE PHARMACY** - 01299 270219. Closes for half day on Saturday. Delivers prescriptions.

**NIGHTINGALE NURSING FUND** - 01746 718210. Rosemary Abbiss is the contact.

**PARISH COUNCIL** -Clerk Matthew Sheehan is in the Market Hall from 9.00 'til 2.00, Monday to Friday. 01299 271154. The Council meets in the Market Hall on the first Monday of the month; meetings are open to the public, who may address the Council in the open Democratic Session before the business meeting starts.

**POST OFFICE** - 01299 270201. Many services in Cleobury: car tax, foreign currency cash point

**SAINT MARY'S YOUTH PROJECT** - Mark Greaves 07828 116810, mark.stmarys@live.co.uk

**SHROPSHIRE COUNCIL** - 0345 678 9000

**SOUTH SHROPSHIRE YOUTH FORUM** - E-mail richard@ssyf.net.

**VOLUNTARY CAR SCHEME** - 01299 270833. Mrs Pat Smith is the coordinator.

**WASTE DISPOSAL** - 0345 678 9007. Contractor Veolia

**WATER SUPPLY EMERGENCIES** - 0800 783 444. 24 Hour helpline if you have a serious problem.

### Larks Rise • Cleobury M'tr

We are pleased to offer this spacious detached four bedroom family home with two reception rooms, conservatory, playroom/study, garden with mature shrubs, garage and driveway parking. The spacious accommodation is finished to a high standard throughout with new double glazed doors, windows and conservatory all added in 2010. 14 Larks Rise has an open aspect to the side on a corner plot in a quiet cul de sac.



**£230,000**

### The Gardens • Clows Top

Situated in a rural village this detached family home with four bedrooms, two receptions, kitchen / breakfast room, cloakroom, pantry, bathroom and shower room. The property also benefits from a spacious studio and a workshop offering versatile uses. Surrounded by pretty gardens and extensive views over the beautiful countryside.



**£360,000**

### Paper Mill • Cleobury M'tr

A terraced one bedroom cottage, located in a quiet no through lane with pleasant outlook over fields. Accommodation includes Lounge, Kitchen, bedroom and bathroom. To the front of the property is a small fore garden area and parking for one vehicle. To the rear is a small elevated garden area. Available August.



**TO LET**

**£425 pcm**

### Rainbow Cottage • Cleobury M'tr

Detached three bedroom bungalow with double garage, driveway parking and garden. Accommodation comprising entrance porch, hallway, lounge / diner, kitchen and utility. Three double bedrooms, bathroom and wc. Double glazed and oil fired central heating.



**TO LET**

**£675 pcm**